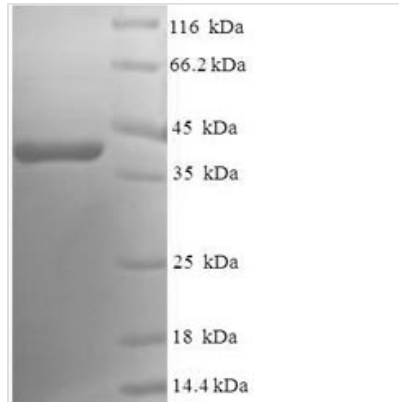




# Recombinant Human Ras-related protein Rab-5A (RAB5A)

<b>Product Code</b>	CSB-EP019213HU
<b>Relevance</b>	The small GTPases Rab are key regulators of intracellular mbrane trafficking, from the formation of transport vesicles to their fusion with mbranes. Rabs cycle between an inactive GDP-bound form and an active GTP-bound form that is able to recruit to mbranes different sets of downstream effectors directly responsible for vesicle formation, movent, tethering and fusion. RAB5A is required for the fusion of plasma mbranes and early endosomes. Contributes to the regulation of filopodia extension.
<b>Abbreviation</b>	Recombinant Human RAB5A protein
<b>Storage</b>	The shelf life is related to many factors, storage state, buffer ingredients, storage temperature and the stability of the protein itself. Generally, the shelf life of liquid form is 6 months at -20°C/-80°C. The shelf life of lyophilized form is 12 months at -20°C/-80°C.
<b>Uniprot No.</b>	P20339
<b>Product Type</b>	Recombinant Protein
<b>Immunogen Species</b>	Homo sapiens (Human)
<b>Purity</b>	Greater than 90% as determined by SDS-PAGE.
<b>Sequence</b>	MASRGATRPNGPNTGNKICQFKLVLLGESAVGKSSLVLRVFKGQFHEFQESTI GAAFLTQTVCLDDTTVKFEIWDTAGQERYHSLAPMYRGAQAIVVYDITNEE SFARAKNWWKELQRQASPNIVIALSGNKADLANKRAVDFQEAQSYADDNSLLF METSAKTSMNVNEIFMAIAKKLPKNEPQNPGANSARGRGVDLTEPTQPTRNQ CCSN
<b>Research Area</b>	Developmental Biology
<b>Source</b>	E.coli
<b>Target Names</b>	RAB5A
<b>Expression Region</b>	1-215aa
<b>Notes</b>	Repeated freezing and thawing is not recommended. Store working aliquots at 4°C for up to one week.
<b>Tag Info</b>	N-terminal 6xHis-SUMO-tagged
<b>Mol. Weight</b>	39.7kDa
<b>Protein Length</b>	Full Length
<b>Image</b>	



(Tris-Glycine gel) Discontinuous SDS-PAGE (reduced) with 5% enrichment gel and 15% separation gel.

### Reconstitution

We recommend that this vial be briefly centrifuged prior to opening to bring the contents to the bottom. Please reconstitute protein in deionized sterile water to a concentration of 0.1-1.0 mg/mL. We recommend to add 5-50% of glycerol (final concentration) and aliquot for long-term storage at -20°C/-80°C. Our default final concentration of glycerol is 50%. Customers could use it as reference.

### Shelf Life

The shelf life is related to many factors, storage state, buffer ingredients, storage temperature and the stability of the protein itself. Generally, the shelf life of liquid form is 6 months at -20°C/-80°C. The shelf life of lyophilized form is 12 months at -20°C/-80°C.