



Recombinant Human Holliday junction recognition protein (HJURP)

Product Code	CSB-EP010467HU
Relevance	Centromeric protein that plays a central role in the incorporation and maintenance of histone H3-like variant CENPA at centromeres. Acts as a specific chaperone for CENPA and is required for the incorporation of newly synthesized CENPA molecules into nucleosomes at replicated centromeres. Prevents CENPA-H4 tetramerization and prevents premature DNA binding by the CENPA-H4 tetramer. Directly binds Holliday junctions.
Abbreviation	Recombinant Human HJURP protein
Storage	The shelf life is related to many factors, storage state, buffer ingredients, storage temperature and the stability of the protein itself. Generally, the shelf life of liquid form is 6 months at -20°C/-80°C. The shelf life of lyophilized form is 12 months at -20°C/-80°C.
Uniprot No.	Q8NCD3
Alias	14-3-3-associated AKT substrateFetal liver-expressing gene 1 proteinUp-regulated in lung cancer 9
Product Type	Recombinant Protein
Immunogen Species	Homo sapiens (Human)
Purity	≥ 90% as determined by SDS-PAGE.
Sequence	MLGTLRAMEGEDVEDDQLLQKLRASRRRFQRRMQRLIEKYNQPFEDTPVVQ MATLTYETPQGLRIWGGRLIKERNEGEIQDSSMKPADRTDGSVQAAAWGPEL PSHRTVLGADSKSGEVDATSDQEEVAVWALAPVPQSPLKNELRRKYLTQVDI LLQGAEYFECAGNRAGRDRVVTPLPSLSPAVPAPGYCSRISRKSPGDKPAK ASSPREWDPLHPSSTDMALVPRNDSLQETSSSSFLSSQPFEDDDICNVTIS DLYAGMLHMSRLLSTKPSSIISTKTFIMQNWNSRRRHRYKSRMNKTYCKGAR RSQRSSKENFIPCSEPVKGTGALRDCKNVLDVSCRKTGLKLEKAFLEVNRPQI HKLDPSWKERKVTTPSKYSSLIYFDSSATYNLDEENRFRTLKWLISPVKIVSRPTI RQGHGENRQREIEIRFDQLHREYCLSPRNQPRRMCLPDSWAMNMYRGGPAS PGGLQGLETRRLSLPSSKAKAKSLSEAFENLGKRSLEAGRCLPKSDSSSSLPK TNPTHSATRPQQTSDLHVQGNSSGIFRKSVSPTKLSVPDKEVPGHGRNRYD EIKEEFDKLHQKYCLKSPGQMTVPLCIGVSTDKASMEVRYQTEGFLGKLNPD HFQGFQKLPSSPLGCRKSLGSTAIEAPSSTCVARAITRDGTRDHQFPAKRPR LSEPQGSGRQGNLGSASDGDVNTVPRPGDQGSSSQPNSEERGENTSYRMEE KSDFMLEKLETKSV
Research Area	Cell Cycle
Source	E.coli
Target Names	HJURP
Expression Region	1-748aa



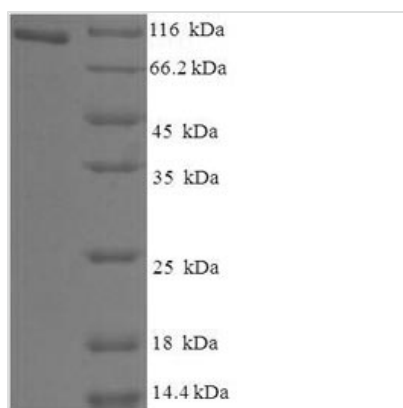
Notes Repeated freezing and thawing is not recommended. Store working aliquots at 4°C for up to one week.

Tag Info N-terminal 6xHis-SUMO-tagged

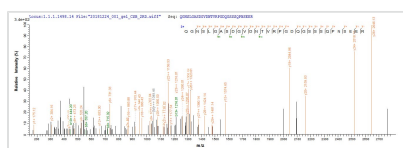
Mol. Weight 99.5kDa

Protein Length Full Length

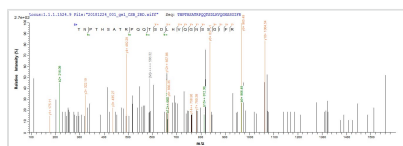
Image



(Tris-Glycine gel) Discontinuous SDS-PAGE (reduced) with 5% enrichment gel and 15% separation gel.



Based on the SEQUEST from database of E.coli host and target protein, the LC-MS/MS Analysis result of CSB-EP010467HU could indicate that this peptide derived from E.coli-expressed Homo sapiens (Human) HJURP.



Based on the SEQUEST from database of E.coli host and target protein, the LC-MS/MS Analysis result of CSB-EP010467HU could indicate that this peptide derived from E.coli-expressed Homo sapiens (Human) HJURP.

Reconstitution We recommend that this vial be briefly centrifuged prior to opening to bring the contents to the bottom. Please reconstitute protein in deionized sterile water to a concentration of 0.1-1.0 mg/mL. We recommend to add 5-50% of glycerol (final concentration) and aliquot for long-term storage at -20°C/-80°C. Our default final concentration of glycerol is 50%. Customers could use it as reference.

Shelf Life The shelf life is related to many factors, storage state, buffer ingredients, storage temperature and the stability of the protein itself. Generally, the shelf life of liquid form is 6 months at -20°C/-80°C. The shelf life of lyophilized form is 12 months at -20°C/-80°C.