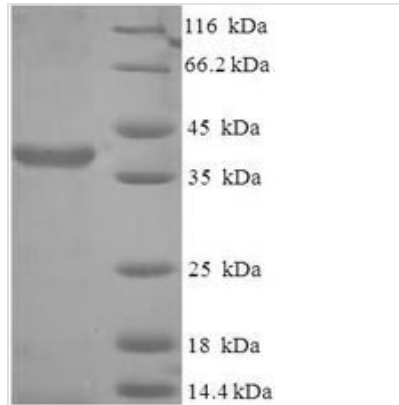




Recombinant Human Protein SCO2 homolog, mitochondrial (SCO2)

Product Code	CSB-EP020853HU
Relevance	Acts as a copper chaperone, transporting copper to the Cu(A) site on the cytochrome c oxidase subunit II (COX2).
Abbreviation	Recombinant Human SCO2 protein
Storage	The shelf life is related to many factors, storage state, buffer ingredients, storage temperature and the stability of the protein itself. Generally, the shelf life of liquid form is 6 months at -20°C/-80°C. The shelf life of lyophilized form is 12 months at -20°C/-80°C.
Uniprot No.	O43819
Product Type	Recombinant Protein
Immunogen Species	Homo sapiens (Human)
Purity	≥ 90% as determined by SDS-PAGE.
Sequence	PAETGGQGQPQGPGLRTRLLITGLFGAGLGGAWLALRAEKERLQQQKRTEAL RQAAVGQGDFHLLDHRGRARCKADFRGQWVLMYFGFTHCPDICPDELEKLV QVVRQLEAEPGLPPVQPVFITVDPERDDVEAMARYVQDFHPRLLGLTGSTKQ VAQASHSYRVYYNAGPKDEDQDYIVDHSIAIYLLNPDGLFTDYYGRSRSAEQIS DSVRRHMAAFRSVLS
Research Area	Metabolism
Source	E.coli
Target Names	SCO2
Expression Region	43-266aa
Notes	Repeated freezing and thawing is not recommended. Store working aliquots at 4°C for up to one week.
Tag Info	N-terminal 6xHis-SUMO-tagged
Mol. Weight	41.1kDa
Protein Length	Full Length of Mature Protein
Image	



(Tris-Glycine gel) Discontinuous SDS-PAGE (reduced) with 5% enrichment gel and 15% separation gel.

Reconstitution

We recommend that this vial be briefly centrifuged prior to opening to bring the contents to the bottom. Please reconstitute protein in deionized sterile water to a concentration of 0.1-1.0 mg/mL. We recommend to add 5-50% of glycerol (final concentration) and aliquot for long-term storage at $-20^{\circ}\text{C}/-80^{\circ}\text{C}$. Our default final concentration of glycerol is 50%. Customers could use it as reference.

Shelf Life

The shelf life is related to many factors, storage state, buffer ingredients, storage temperature and the stability of the protein itself. Generally, the shelf life of liquid form is 6 months at $-20^{\circ}\text{C}/-80^{\circ}\text{C}$. The shelf life of lyophilized form is 12 months at $-20^{\circ}\text{C}/-80^{\circ}\text{C}$.