

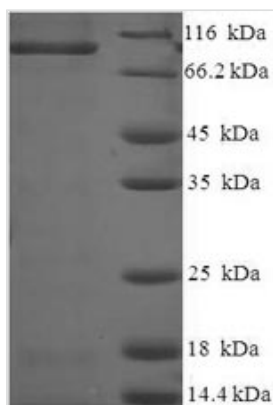


Recombinant Rat Caprin-1 (Caprin1)

Product Code	CSB-EP711733RA
Relevance	May regulate the transport and translation of mRNAs of proteins involved in synaptic plasticity in neurons and cell proliferation and migration in multiple cell types.
Abbreviation	Recombinant Rat Caprin1 protein
Storage	The shelf life is related to many factors, storage state, buffer ingredients, storage temperature and the stability of the protein itself. Generally, the shelf life of liquid form is 6 months at -20°C/-80°C. The shelf life of lyophilized form is 12 months at -20°C/-80°C.
Uniprot No.	Q5M9G3
Alias	Cytoplasmic domain activation- and proliferation-associated protein 1;GPI-anchored protein p137 ;GPI-p137 ;p137GPI RNA granule protein 105
Product Type	Recombinant Protein
Immunogen Species	Rattus norvegicus (Rat)
Purity	≥ 90% as determined by SDS-PAGE.
Sequence	<p>PSATSHSGSGSKSSGPPPPSGSSGSEAAAGAAAPASQHPATGTGAVQTEAM KQILGVIDKLRNLEKKKGLDDYQERMNKGERLNQDQLDAVSKYQEVTTNLE FAKELQRSFMALSQDIQKTIKKTARREQLMREEAEQKRLKTVLELQYVLDKLG DDDVRTDLKQGLSGVPILSEEELSLLEDFYKLVDPERDMSLRRLNEQYEHASIH WDLLEGKEKPVCGTTYKALKEIVERVFQSNYFDSTHNNHQNGLCEEEEEAASAPI VEDQVAEAEPEPTTEYTEQSEVESTEYVNRQFMAETQFSSGEKEQVDEWAV ETVEVVNSLQQQPQAASPSVPEPHSLTPVAQSDPLVRRQRVQDLMAQMGP YNFIQDSMLDFENQTLDPAIVSAQPMNPTQNMDMPQLVCPQVHSESRLAQS NQVPVQPEATQVPLVSSSTSEGYTASQPLYQPSHAAEQRPQKEPIDQIQATISLNT EQTTASSSLPAASQPQVFQAGASKPLHSSGINVNAAPFQSMQTVFNMNAPVP PVNEPETLKQQSQYQASYNQSFSSQPHQVEQTELQQDQLQTVVGTYHGSQD QPHQVPGNHQQPPQQSTGFPRSSQPYNSRGVSRGGSRGARGLMNGYRG PANGFRGGYDGYRSSFNTPSNGYTQSQFNAPRDYSGYQRDGYQQNFKRG SGQSGPRGAPRGRGGPPRPNRGMPQMNTQQVN</p>
Research Area	Others
Source	E.coli
Target Names	Caprin1
Expression Region	2-707aa
Notes	Repeated freezing and thawing is not recommended. Store working aliquots at 4°C for up to one week.
Tag Info	N-terminal 6xHis-SUMO-tagged
Mol. Weight	94.0kDa
Protein Length	Full Length of Mature Protein



Image



(Tris-Glycine gel) Discontinuous SDS-PAGE (reduced) with 5% enrichment gel and 15% separation gel.

Reconstitution

We recommend that this vial be briefly centrifuged prior to opening to bring the contents to the bottom. Please reconstitute protein in deionized sterile water to a concentration of 0.1-1.0 mg/mL. We recommend to add 5-50% of glycerol (final concentration) and aliquot for long-term storage at -20°C/-80°C. Our default final concentration of glycerol is 50%. Customers could use it as reference.

Shelf Life

The shelf life is related to many factors, storage state, buffer ingredients, storage temperature and the stability of the protein itself.

Generally, the shelf life of liquid form is 6 months at -20°C/-80°C. The shelf life of lyophilized form is 12 months at -20°C/-80°C.