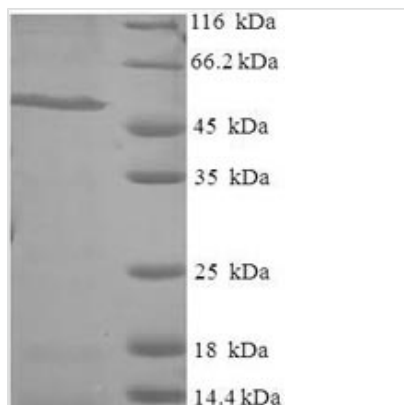




Recombinant Human Ras-specific guanine nucleotide-releasing factor RalGPS1 (RALGPS1)

Product Code	CSB-EP683358HU
Relevance	Guanine nucleotide exchange factor (GEF) for the small GTPase RALA. May be involved in cytoskeletal organization . Guanine nucleotide exchange factor for.
Abbreviation	Recombinant Human RALGPS1 protein
Storage	The shelf life is related to many factors, storage state, buffer ingredients, storage temperature and the stability of the protein itself. Generally, the shelf life of liquid form is 6 months at -20°C/-80°C. The shelf life of lyophilized form is 12 months at -20°C/-80°C.
Uniprot No.	Q5JS13
Alias	Ral GEF with PH domain and SH3-binding motif 1Ral guanine nucleotide exchange factor 2 ;RalGEF 2RalA exchange factor RalGPS1
Product Type	Recombinant Protein
Immunogen Species	Homo sapiens (Human)
Purity	Greater than 90% as determined by SDS-PAGE.
Sequence	MYKRNGLMASVLVTSATPQGSSSSDSLEGQSCDYASKSYDAVVFDVLKVTPE EFASQITLMDIPVFKAIQPEELASCGWSKKEKHSLAPNVVAFTRRFNQVSWV VREILTAQTLKIRAEILSHFVKIAKKLLELNNLHSLMSVVSALQSAPIFRLTKTWAL LNRKDKTTFEKLDYLMSKEDNYKRTREYIRSLKMOVPSIPYLGIIYLLDIYIDSAYP ASGSIMENEQRSNQMNILRIIADLQVSCSYDHLTTLPHVQKYLKSVRYIEELQ KFVEDDNYKLSLRIEPGSSSPRLVSSKEDLAAM
Research Area	Signal Transduction
Source	E.coli
Target Names	RALGPS1
Expression Region	1-305aa
Notes	Repeated freezing and thawing is not recommended. Store working aliquots at 4°C for up to one week.
Tag Info	N-terminal 6xHis-SUMO-tagged
Mol. Weight	50.7kDa
Protein Length	Full Length of Isoform 4
Image	



(Tris-Glycine gel) Discontinuous SDS-PAGE (reduced) with 5% enrichment gel and 15% separation gel.

Reconstitution

We recommend that this vial be briefly centrifuged prior to opening to bring the contents to the bottom. Please reconstitute protein in deionized sterile water to a concentration of 0.1-1.0 mg/mL. We recommend to add 5-50% of glycerol (final concentration) and aliquot for long-term storage at -20°C/-80°C. Our default final concentration of glycerol is 50%. Customers could use it as reference.

Shelf Life

The shelf life is related to many factors, storage state, buffer ingredients, storage temperature and the stability of the protein itself. Generally, the shelf life of liquid form is 6 months at -20°C/-80°C. The shelf life of lyophilized form is 12 months at -20°C/-80°C.