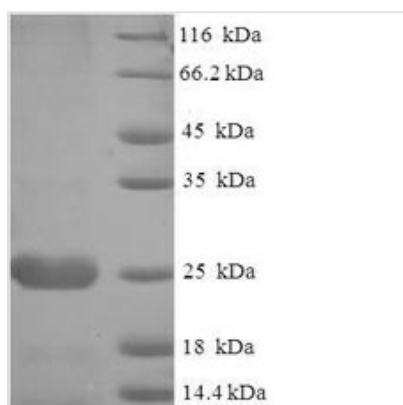




# Recombinant *Pseudomonas syringae* pv. tomato Thiol:disulfide interchange protein DsbA (dsbA)

<b>Product Code</b>	CSB-EP528735FGP
<b>Relevance</b>	Involved in disulfide-bond formation. Acts by transferring its disulfide bond to other proteins .
<b>Abbreviation</b>	Recombinant <i>Pseudomonas syringae</i> pv. tomato dsbA protein
<b>Storage</b>	The shelf life is related to many factors, storage state, buffer ingredients, storage temperature and the stability of the protein itself. Generally, the shelf life of liquid form is 6 months at -20°C/-80°C. The shelf life of lyophilized form is 12 months at -20°C/-80°C.
<b>Uniprot No.</b>	O52376
<b>Product Type</b>	Recombinant Protein
<b>Immunogen Species</b>	<i>Pseudomonas syringae</i> pv. tomato (strain ATCC BAA-871 / DC3000)
<b>Purity</b>	≥ 90% as determined by SDS-PAGE.
<b>Sequence</b>	AEPIESGKQYVELTSAVPVAVPGKIEVIELFWYGCPHCYAFEPTINPWVEKLPS DVNFVRIPAMFGGPWDAHGQLFITLDTMGVEHKVHAAVFEAIQKGGKRLTDKN DMADFVATQGVNKDDFLKTFDSFAVKGKIAQYKELAKKYEVTGVPTMIVNGKY RFDLGSAGGPEKTLQVADQLIDKERAATAAK
<b>Research Area</b>	Others
<b>Source</b>	E.coli
<b>Target Names</b>	dsbA
<b>Expression Region</b>	23-214aa
<b>Notes</b>	Repeated freezing and thawing is not recommended. Store working aliquots at 4°C for up to one week.
<b>Tag Info</b>	N-terminal 6xHis-tagged
<b>Mol. Weight</b>	25.1kDa
<b>Protein Length</b>	Full Length of Mature Protein

## Image



(Tris-Glycine gel) Discontinuous SDS-PAGE (reduced) with 5% enrichment gel and 15% separation gel.



---

**Reconstitution**

We recommend that this vial be briefly centrifuged prior to opening to bring the contents to the bottom. Please reconstitute protein in deionized sterile water to a concentration of 0.1-1.0 mg/mL. We recommend to add 5-50% of glycerol (final concentration) and aliquot for long-term storage at -20°C/-80°C. Our default final concentration of glycerol is 50%. Customers could use it as reference.

---

**Shelf Life**

The shelf life is related to many factors, storage state, buffer ingredients, storage temperature and the stability of the protein itself. Generally, the shelf life of liquid form is 6 months at -20°C/-80°C. The shelf life of lyophilized form is 12 months at -20°C/-80°C.