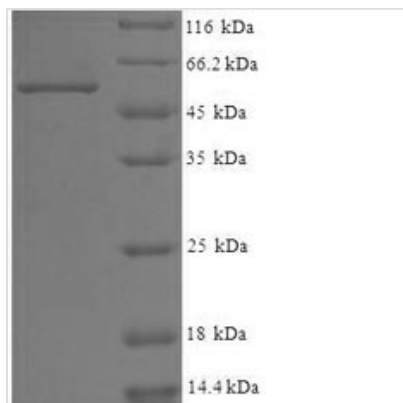




Recombinant Human WD repeat-containing protein 5 (WDR5)

Product Code	CSB-EP026038HU
Relevance	Contributes to histone modification. May position the N-terminus of histone H3 for efficient trimethylation at 'Lys-4'. As part of the MLL1/MLL complex it is involved in methylation and dimethylation at 'Lys-4' of histone H3. H3 'Lys-4' methylation represents a specific tag for epigenetic transcriptional activation. As part of the NSL complex it may be involved in acetylation of nucleosomal histone H4 on several lysine residues. May regulate osteoblasts differentiation.
Abbreviation	Recombinant Human WDR5 protein
Storage	The shelf life is related to many factors, storage state, buffer ingredients, storage temperature and the stability of the protein itself. Generally, the shelf life of liquid form is 6 months at -20°C/-80°C. The shelf life of lyophilized form is 12 months at -20°C/-80°C.
Uniprot No.	P61964
Alias	BMP2-induced 3-kb gene protein
Product Type	Recombinant Protein
Immunogen Species	Homo sapiens (Human)
Purity	Greater than 90% as determined by SDS-PAGE.
Sequence	ATEEKKPETEAARAQPTPSSSATQSKPTPVKPNYALKFTLAGHTKAVSSVKFS PNGEWLASSSADKLIKIWGAYDGKFEKTISGHKLGISDVAWSSDSNLLVSASD DKTLKIWDVSSGKCLKTLKGHSNYVFCNFPQSNLIVSGSFDES SVRIWDVKT GKCLKTLP AHSDPVSAVHFNRDGLIVSSSYDGLCRIWDTASGQCLKTLIDDD NPPVSFVKFSPNGKYILAATLDNTLKLWDYSKGKCLKTYTGHKNEKYCIFANFS VTGGKWIVSGSEDNLVYIWNLQTKEIVQKLQGHTD VVISTACHPTENIIASAAL NDKTIKLWKS DC
Research Area	Transcription
Source	E.coli
Target Names	WDR5
Expression Region	2-334aa
Notes	Repeated freezing and thawing is not recommended. Store working aliquots at 4°C for up to one week.
Tag Info	N-terminal 6xHis-SUMO-tagged
Mol. Weight	52.5kDa
Protein Length	Full Length of Mature Protein
Image	



(Tris-Glycine gel) Discontinuous SDS-PAGE (reduced) with 5% enrichment gel and 15% separation gel.

Reconstitution

We recommend that this vial be briefly centrifuged prior to opening to bring the contents to the bottom. Please reconstitute protein in deionized sterile water to a concentration of 0.1-1.0 mg/mL. We recommend to add 5-50% of glycerol (final concentration) and aliquot for long-term storage at -20°C/-80°C. Our default final concentration of glycerol is 50%. Customers could use it as reference.

Shelf Life

The shelf life is related to many factors, storage state, buffer ingredients, storage temperature and the stability of the protein itself. Generally, the shelf life of liquid form is 6 months at -20°C/-80°C. The shelf life of lyophilized form is 12 months at -20°C/-80°C.