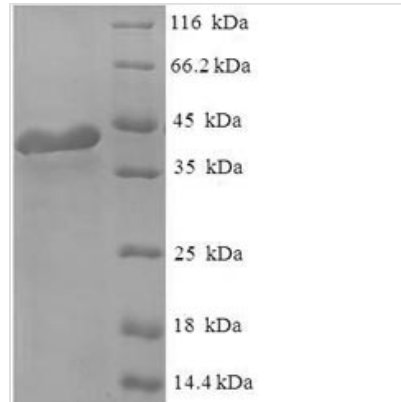




# Recombinant Human Regulator of G-protein signaling 2 (RGS2)

<b>Product Code</b>	CSB-EP019651HU
<b>Relevance</b>	Inhibits signal transduction by increasing the GTPase activity of G protein alpha subunits thereby driving th into their inactive GDP-bound form. May play a role in leukogenesis. Plays a role in negative feedback control pathway for adenylyl cyclase signaling. Binds EIF2B5 and blocks its activity, thereby inhibiting the translation of mRNA into protein.
<b>Abbreviation</b>	Recombinant Human RGS2 protein
<b>Storage</b>	The shelf life is related to many factors, storage state, buffer ingredients, storage temperature and the stability of the protein itself. Generally, the shelf life of liquid form is 6 months at -20°C/-80°C. The shelf life of lyophilized form is 12 months at -20°C/-80°C.
<b>Uniprot No.</b>	P41220
<b>Alias</b>	Cell growth-inhibiting gene 31 protein;G0/G1 switch regulatory protein 8
<b>Product Type</b>	Recombinant Protein
<b>Immunogen Species</b>	Homo sapiens (Human)
<b>Purity</b>	Greater than 90% as determined by SDS-PAGE.
<b>Sequence</b>	MQSAMFLAVQHDCRPMDKSAGSGHKSEEKREKMKRTRLLKDWKTRLSYFLQN SSTPGKPKTGKKSKQQAFIKPSPEEAQLWSEAFDELLASKYGLAAFRAFLKSE FCEENIEFWLACEDFKKTKSPQKLSSKARKIYTDIEKEAPKEINIDFQTKTLIAQ NIQEATSGCFTTAQKRVSLSMENNYSYPRFLESEFYQDLCKKPQITTEPHAT
<b>Research Area</b>	Signal Transduction
<b>Source</b>	E.coli
<b>Target Names</b>	RGS2
<b>Expression Region</b>	1-211aa
<b>Notes</b>	Repeated freezing and thawing is not recommended. Store working aliquots at 4°C for up to one week.
<b>Tag Info</b>	N-terminal 6xHis-SUMO-tagged
<b>Mol. Weight</b>	40.4kDa
<b>Protein Length</b>	Full Length
<b>Image</b>	



(Tris-Glycine gel) Discontinuous SDS-PAGE (reduced) with 5% enrichment gel and 15% separation gel.

### Reconstitution

We recommend that this vial be briefly centrifuged prior to opening to bring the contents to the bottom. Please reconstitute protein in deionized sterile water to a concentration of 0.1-1.0 mg/mL. We recommend to add 5-50% of glycerol (final concentration) and aliquot for long-term storage at -20°C/-80°C. Our default final concentration of glycerol is 50%. Customers could use it as reference.

### Shelf Life

The shelf life is related to many factors, storage state, buffer ingredients, storage temperature and the stability of the protein itself. Generally, the shelf life of liquid form is 6 months at -20°C/-80°C. The shelf life of lyophilized form is 12 months at -20°C/-80°C.