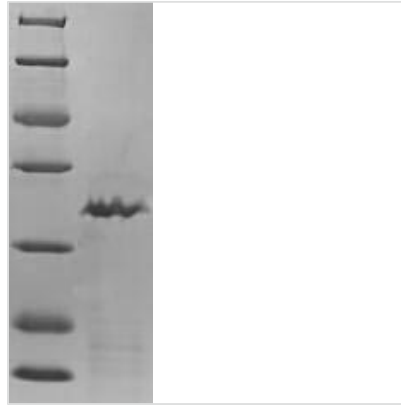




# Recombinant Chicken Transforming growth factor beta-1 proprotein (TGFB1), partial

<b>Product Code</b>	CSB-EP023446CH
<b>Relevance</b>	Multifunctional protein that control proliferation, differentiation, and other functions in many cell types. Many cells synthesize TGFB1 and essentially all of th have specific receptors for this protein. It regulates the actions of many other growth factors and determines a positive or negative direction of their effects. It plays an important role in bone rodeling. It is a potent stimulator of osteoblastic bone formation, causing chotaxis, proliferation and differentiation in committed osteoblasts .
<b>Abbreviation</b>	Recombinant Chicken TGFB1 protein, partial
<b>Storage</b>	The shelf life is related to many factors, storage state, buffer ingredients, storage temperature and the stability of the protein itself. Generally, the shelf life of liquid form is 6 months at -20°C/-80°C. The shelf life of lyophilized form is 12 months at -20°C/-80°C.
<b>Uniprot No.</b>	P09531
<b>Product Type</b>	Recombinant Proteins
<b>Immunogen Species</b>	Gallus gallus (Chicken)
<b>Purity</b>	≥ 90% as determined by SDS-PAGE.
<b>Sequence</b>	DLDTDYCFGPGTDEKNCCVRPLYIDFRKDLQWKWIHEPKGYMANFCMGPCP YIWSADTQYTKVLALYNQHNP GASAAPCCVPQTL DPLPIIYYVGRNVRVEQLS NMVVRACKCS
<b>Research Area</b>	Others
<b>Source</b>	E.coli
<b>Target Names</b>	TGFB1
<b>Expression Region</b>	278-391aa
<b>Notes</b>	Repeated freezing and thawing is not recommended. Store working aliquots at 4°C for up to one week.
<b>Tag Info</b>	N-terminal 6xHis-SUMO-tagged
<b>Mol. Weight</b>	29.0kDa
<b>Protein Length</b>	Partial
<b>Image</b>	



(Tris-Glycine gel) Discontinuous SDS-PAGE (reduced) with 5% enrichment gel and 15% separation gel.

### Shelf Life

The shelf life is related to many factors, storage state, buffer ingredients, storage temperature and the stability of the protein itself.

Generally, the shelf life of liquid form is 6 months at  $-20^{\circ}\text{C}/-80^{\circ}\text{C}$ . The shelf life of lyophilized form is 12 months at  $-20^{\circ}\text{C}/-80^{\circ}\text{C}$ .