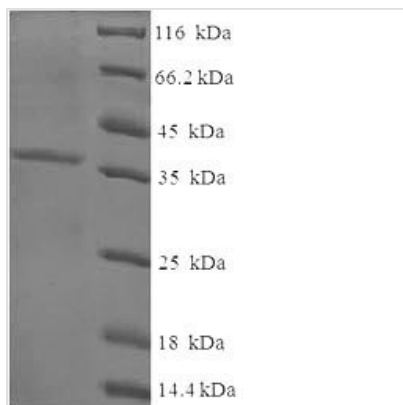


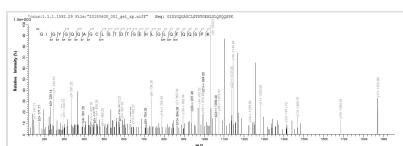


Recombinant Human Cysteine and glycine-rich protein 3 (CSRP3)

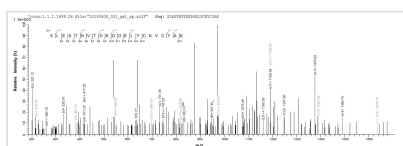
Product Code	CSB-EP006087HU
Relevance	Positive regulator of myogenesis. Plays a crucial and specific role in the organization of cytosolic structures in cardiomyocytes. Could play a role in mechanical stretch sensing. May be a scaffold protein that promotes the assembly of interacting proteins at Z-line structures. It is essential for calcineurin anchorage to the Z line. Required for stress-induced calcineurin-NFAT activation.
Abbreviation	Recombinant Human CSRP3 protein
Storage	The shelf life is related to many factors, storage state, buffer ingredients, storage temperature and the stability of the protein itself. Generally, the shelf life of liquid form is 6 months at -20°C/-80°C. The shelf life of lyophilized form is 12 months at -20°C/-80°C.
Uniprot No.	P50461
Alias	Cardiac LIM protein;Cysteine-rich protein 3 ;CRP3LIM domain protein, cardiacMuscle LIM protein
Product Type	Recombinant Protein
Immunogen Species	Homo sapiens (Human)
Purity	Greater than 90% as determined by SDS-PAGE.
Sequence	MPNWGGGAKCGACEKTVYHAEIQCNGRSFHKTCFHCMACRKALDSTTVAA HESEIYCKVCYGRRYGPKGIGYGQGAGCLSTDTGEHLGLQFQQSPKPARSVT TSNPSKFTAKFGESEKCPRCGKSVYAAEKVMGGGKPDWHKTCFRCAICGKSLE STNVTDKDGELYCKVCYAKNFGPTGIGFGGLTQQVEKKE
Research Area	Developmental Biology
Source	E.coli
Target Names	CSRP3
Expression Region	1-194aa
Notes	Repeated freezing and thawing is not recommended. Store working aliquots at 4°C for up to one week.
Tag Info	N-terminal 6xHis-SUMO-tagged
Mol. Weight	37.0kDa
Protein Length	Full Length
Image	



(Tris-Glycine gel) Discontinuous SDS-PAGE (reduced) with 5% enrichment gel and 15% separation gel.



Based on the SEQUEST from database of E.coli host and target protein, the LC-MS/MS Analysis result of CSB-EP006087HU could indicate that this peptide derived from E.coli-expressed Homo sapiens (Human) CSRP3.



Based on the SEQUEST from database of E.coli host and target protein, the LC-MS/MS Analysis result of CSB-EP006087HU could indicate that this peptide derived from E.coli-expressed Homo sapiens (Human) CSRP3.

Reconstitution

We recommend that this vial be briefly centrifuged prior to opening to bring the contents to the bottom. Please reconstitute protein in deionized sterile water to a concentration of 0.1-1.0 mg/mL. We recommend to add 5-50% of glycerol (final concentration) and aliquot for long-term storage at -20°C/-80°C. Our default final concentration of glycerol is 50%. Customers could use it as reference.

Shelf Life

The shelf life is related to many factors, storage state, buffer ingredients, storage temperature and the stability of the protein itself. Generally, the shelf life of liquid form is 6 months at -20°C/-80°C. The shelf life of lyophilized form is 12 months at -20°C/-80°C.