

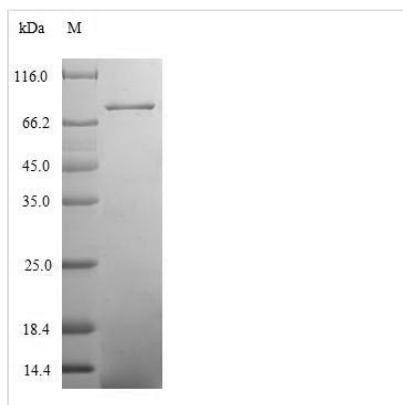


Recombinant Human Coiled-coil domain-containing protein 41 (CCDC41)

Product Code	CSB-EP896730HU
Relevance	Component of the distal appendage region of the centriole involved in the initiation of primary cilium assembly. May collaborate with IFT20 in the trafficking of ciliary membrane proteins from the Golgi complex to the cilium during the initiation of primary cilium assembly.
Abbreviation	Recombinant Human CCDC41 protein
Storage	The shelf life is related to many factors, storage state, buffer ingredients, storage temperature and the stability of the protein itself. Generally, the shelf life of liquid form is 6 months at -20°C/-80°C. The shelf life of lyophilized form is 12 months at -20°C/-80°C.
Uniprot No.	Q9Y592
Alias	Coiled-coil domain-containing protein 41 Renal carcinoma antigen NY-REN-58
Product Type	Recombinant Protein
Immunogen Species	Homo sapiens (Human)
Purity	≥ 90% as determined by SDS-PAGE.
Sequence	MLIDERLRCEHHKANYQTLKAEHTRLQNEHVKLQNELKHLFNEKQTQQEKLQL LLEELRGELVEKTKDLEEMKLQILTPQKLELLRAQIQQELETMPRERFRNLDEE VEKYRAVYNKLRYEHTFLKSEFEHQKEEYARILDEGKIKYESEIARLEEDKEELR NQLLNVDLTKDSKRVEQLAREKVYLCQKLGLEAEVAELKAEKENSEAQVENA QRIQVRQLAEMQATVRSLEAEKQSANLRAERLEKELQSSSEQNTFLINKLHKA EREINTLSSKVKELKHSNKLEITDIKLETARAKSELERERNKIQSELDGLQSDNEI LKAAVEHHKVLLVEKDRELIRKVQAAKEEGYQKLVVLQDEKLELENRLADLEK MKVEHDVWRQSEKDQYEEKLRASQMAEEITRKELQSVRLKQQQIVTIENAEK EKNENSDLKQQISSLQIQVTSLAQSENDLLNSNQMLKEMVERLQECRNFRSQ AEKAQLEAEKTLQIQWLEEKHKLHERITDREEKYNQAKEKLQRAAIAQKKL EQDLELGCPSTDTYRESVFPPLKRDLLK
Research Area	Cell Biology
Source	E.coli
Target Names	CEP83
Expression Region	1-568aa
Notes	Repeated freezing and thawing is not recommended. Store working aliquots at 4°C for up to one week.
Tag Info	N-terminal 6xHis-SUMO-tagged
Mol. Weight	83.4kDa
Protein Length	Full Length of Isoform 2



Image



(Tris-Glycine gel) Discontinuous SDS-PAGE (reduced) with 5% enrichment gel and 15% separation gel.

Reconstitution

We recommend that this vial be briefly centrifuged prior to opening to bring the contents to the bottom. Please reconstitute protein in deionized sterile water to a concentration of 0.1-1.0 mg/mL. We recommend to add 5-50% of glycerol (final concentration) and aliquot for long-term storage at -20°C/-80°C. Our default final concentration of glycerol is 50%. Customers could use it as reference.

Shelf Life

The shelf life is related to many factors, storage state, buffer ingredients, storage temperature and the stability of the protein itself. Generally, the shelf life of liquid form is 6 months at -20°C/-80°C. The shelf life of lyophilized form is 12 months at -20°C/-80°C.