

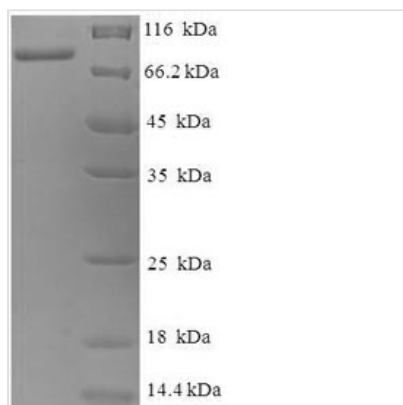


# Recombinant Bacillus subtilis Levanase (sacC)

<b>Product Code</b>	CSB-EP356581BRJ
<b>Relevance</b>	Exo-fructosidase that can hydrolyze both levan and inulin, leading to the production of free fructose. Is also able to hydrolyze sucrose and to a small extent raffinose, but not melezitose, stachylose, cellobiose, maltose, and lactose.
<b>Abbreviation</b>	Recombinant Bacillus subtilis sacC protein
<b>Storage</b>	The shelf life is related to many factors, storage state, buffer ingredients, storage temperature and the stability of the protein itself. Generally, the shelf life of liquid form is 6 months at -20°C/-80°C. The shelf life of lyophilized form is 12 months at -20°C/-80°C.
<b>Uniprot No.</b>	P05656
<b>Alias</b>	Beta-D-fructofuranosidase;Exo-beta-D-fructosidase;Exo-levanase
<b>Product Type</b>	Recombinant Protein
<b>Immunogen Species</b>	Bacillus subtilis (strain 168)
<b>Purity</b>	≥ 90% as determined by SDS-PAGE.
<b>Sequence</b>	ADSSYYDEDYRPQYHFTPEANWMNDPNGMVYYAGEYHLFYQYHPYGLQWG PMHWGHAVSKDLVTWEHLPVALYPDEKGTIFSGSAVVDKNNTSGFQTGKEKP LVAIYTQDREGHQVQSIAYSNDKGRWTWTKYAGNPVIPNPGKKDFRDPKVFY EKEKKWVMVLAAGDRILIYTSKNLKQWTYASEFGQDQGGSHGGVWECDFEL PVDGNPNQKKWVMQVSVGNGAVSGGSGMQYFVGDFDGTDFKKNENPPNKVL WTDYGRDFYAAVSWSDIPSTDSRRLWLGWMSNWQYANDVPTSPWRSATSIP RELKLFKAFTEGVRVVQTPVKELETIRGTSKKWKNLTISPASHNVLGQSGDAY EINAEFKVSPGSAAEFGFKVRTGENQFTKVGYDRRNAKLFVDRSESGNDTFN PAFNTGKETAPLKPVNGKVKLRIFVDRSSVEVFGNDGKQVITDIILPDRSSKGLE LYAANGGVKVKSLTIHPLKKVWGTTPFMSNMTGWTTVNGTWADTIEGKQGRS DGDSFILSSASGSDFTYESDITIKDGNRGRGALMFRSDKDAKNGYLANVDAK HDLVKFFKFENGAASVIAEYKTPIDVNNKKYHLKTEAEGDRFKIYLDDRLVIDAHD SVFSEGGFGLNVWDATAVFNQVTKES
<b>Research Area</b>	Others
<b>Source</b>	E.coli
<b>Target Names</b>	sacC
<b>Expression Region</b>	25-677aa
<b>Notes</b>	Repeated freezing and thawing is not recommended. Store working aliquots at 4°C for up to one week.
<b>Tag Info</b>	N-terminal 6xHis-tagged
<b>Mol. Weight</b>	77.2kDa
<b>Protein Length</b>	Full Length of Mature Protein



## Image



(Tris-Glycine gel) Discontinuous SDS-PAGE (reduced) with 5% enrichment gel and 15% separation gel.

## Reconstitution

We recommend that this vial be briefly centrifuged prior to opening to bring the contents to the bottom. Please reconstitute protein in deionized sterile water to a concentration of 0.1-1.0 mg/mL. We recommend to add 5-50% of glycerol (final concentration) and aliquot for long-term storage at -20°C/-80°C. Our default final concentration of glycerol is 50%. Customers could use it as reference.

## Shelf Life

The shelf life is related to many factors, storage state, buffer ingredients, storage temperature and the stability of the protein itself. Generally, the shelf life of liquid form is 6 months at -20°C/-80°C. The shelf life of lyophilized form is 12 months at -20°C/-80°C.