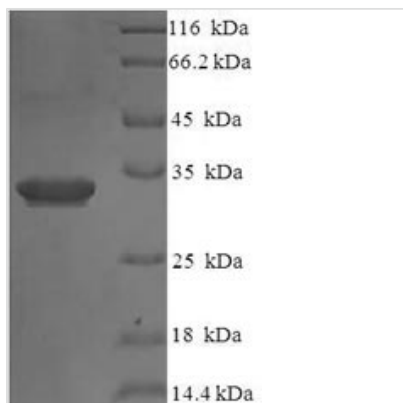




# Recombinant Human Interleukin-36 receptor antagonist protein (IL36RN)

<b>Product Code</b>	CSB-EP866201HU
<b>Relevance</b>	Inhibits the activity of interleukin-36 (IL36A,IL36B and IL36G) by binding to receptor IL1RL2 and preventing its association with the coreceptor IL1RAP for signaling. Part of the IL-36 signaling syst that is thought to be present in epithelial barriers and to take part in local inflammatory response; similar to the IL-1 syst with which it shares the coreceptor. Proposed to play a role in skin inflammation. May be involved in the innate immune response to fungal pathogens, such as Aspergillus fumigatus. May activate an anti-inflammatory signaling pathway by recruiting SIGIRR.
<b>Abbreviation</b>	Recombinant Human IL36RN protein
<b>Storage</b>	The shelf life is related to many factors, storage state, buffer ingredients, storage temperature and the stability of the protein itself. Generally, the shelf life of liquid form is 6 months at -20°C/-80°C. The shelf life of lyophilized form is 12 months at -20°C/-80°C.
<b>Uniprot No.</b>	Q9UBH0
<b>Alias</b>	FIL1 delta;IL-1-related protein 3 ;IL-1RP3;Interleukin-1 HY1 ;IL-1HY1;Interleukin-1 delta ;IL-1 delta;Interleukin-1 family member 5 ;IL-1F5;Interleukin-1 receptor antagonist homolog 1 ;IL-1ra homolog 1;Interleukin-1-like protein 1 ;IL-1L1
<b>Product Type</b>	Recombinant Protein
<b>Immunogen Species</b>	Homo sapiens (Human)
<b>Purity</b>	Greater than 90% as determined by SDS-PAGE.
<b>Sequence</b>	MVLSGALCFRMKDSALKVLYLHNNQLLAGGLHAGKVIKGEEISVVPNRWLDAS LSPVILGVQGGSQCLSCGVGQEPTLTLEPVNIMELYLGAKESKSFTFYRRDMG LTSSFESAAYPGWFLCTVPEADQPVRTQLPENGGWNAPITDFYFQQCD
<b>Research Area</b>	Immunology
<b>Source</b>	E.coli
<b>Target Names</b>	IL36RN
<b>Expression Region</b>	1-155aa
<b>Notes</b>	Repeated freezing and thawing is not recommended. Store working aliquots at 4°C for up to one week.
<b>Tag Info</b>	N-terminal 6xHis-SUMO-tagged
<b>Mol. Weight</b>	33.0kDa
<b>Protein Length</b>	Full Length

Image



(Tris-Glycine gel) Discontinuous SDS-PAGE (reduced) with 5% enrichment gel and 15% separation gel.

### Reconstitution

We recommend that this vial be briefly centrifuged prior to opening to bring the contents to the bottom. Please reconstitute protein in deionized sterile water to a concentration of 0.1-1.0 mg/mL. We recommend to add 5-50% of glycerol (final concentration) and aliquot for long-term storage at -20°C/-80°C. Our default final concentration of glycerol is 50%. Customers could use it as reference.

### Shelf Life

The shelf life is related to many factors, storage state, buffer ingredients, storage temperature and the stability of the protein itself. Generally, the shelf life of liquid form is 6 months at -20°C/-80°C. The shelf life of lyophilized form is 12 months at -20°C/-80°C.