

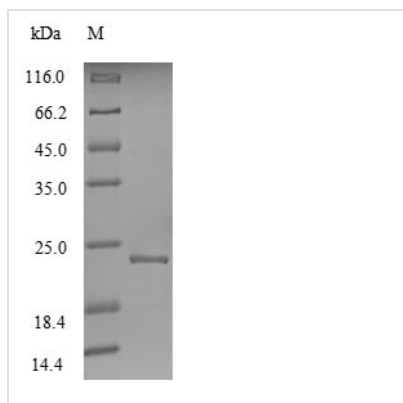


Recombinant Hepatitis E virus genotype 1 Non-structural polyprotein pORF1 (ORF1), partial

Product Code	CSB-EP327230HGE
Relevance	Methyltransferase displays a Cytoplasmic domain capping enzyme activity. This function is necessary since all viral RNAs are synthesized in the cytoplasm, and host capping enzymes are restricted to the nucleus. The enzymatic reaction involves a covalent link between 7-methyl-GMP and the methyltransferase, whereas eukaryotic capping enzymes form a covalent complex only with GMP. Methyltransferase catalyzes transfer of a methyl group from S-adenosylmethionine to GTP and GDP to yield m7GTP or m7GDP. GMP, GpppG, and GpppA were poor substrates for the methyltransferase. This enzyme also displays guanylyltransferase activity to form a covalent complex, methyltransferase-m7GMP, from which 7-methyl-GMP is transferred to the mRNA to create the cap structure. Cap analogs such as m7GTP, m7GDP, et2m7GMP, and m2et7GMP inhibit the methyltransferase reaction. RNA-directed RNA polymerase plays an essential role in the virus replication. Binds to the 3'-end of the genomic RNA, probably to initiate replication ..
Abbreviation	Recombinant Hepatitis E virus genotype 1 ORF1 protein, partial
Storage	The shelf life is related to many factors, storage state, buffer ingredients, storage temperature and the stability of the protein itself. Generally, the shelf life of liquid form is 6 months at -20°C/-80°C. The shelf life of lyophilized form is 12 months at -20°C/-80°C.
Uniprot No.	P33424
Product Type	Recombinant Protein
Immunogen Species	Hepatitis E virus genotype 1 (isolate Human/Pakistan/Sar-55) (HEV-1)
Purity	Greater than 90% as determined by SDS-PAGE.
Sequence	EVFWNHPIQRVIHNELELYCRARSGRCLEIGAHPRSINDNPNVVHRCFLRPAG RDVQRWYTAPTRGPAANCRRSALRGLPAADRITYCFDGFSGCNFPAETGIALY SLHDMSPSDVAEAMFRHGMTRLYAALHLPPEVLLPPGTYRTASYLLIHDGRRV VVTYEGDTSAGYNHDVSNLRSWI
Research Area	Others
Source	E.coli
Target Names	ORF1
Expression Region	60-240aa
Notes	Repeated freezing and thawing is not recommended. Store working aliquots at 4°C for up to one week.
Tag Info	N-terminal 6xHis-tagged
Mol. Weight	24.4kDa

**Protein Length**

Partial

Image

(Tris-Glycine gel) Discontinuous SDS-PAGE (reduced) with 5% enrichment gel and 15% separation gel.

Reconstitution

We recommend that this vial be briefly centrifuged prior to opening to bring the contents to the bottom. Please reconstitute protein in deionized sterile water to a concentration of 0.1-1.0 mg/mL. We recommend to add 5-50% of glycerol (final concentration) and aliquot for long-term storage at -20°C/-80°C. Our default final concentration of glycerol is 50%. Customers could use it as reference.

Shelf Life

The shelf life is related to many factors, storage state, buffer ingredients, storage temperature and the stability of the protein itself. Generally, the shelf life of liquid form is 6 months at -20°C/-80°C. The shelf life of lyophilized form is 12 months at -20°C/-80°C.