



Recombinant Human Calpain-1 catalytic subunit (CAPN1)

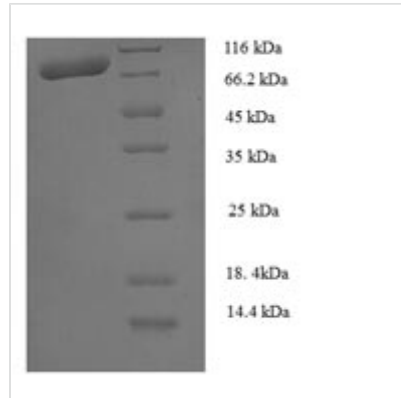
Product Code	CSB-EP004490HU
Relevance	Calcium-regulated non-lysosomal thiol-protease which catalyze limited proteolysis of substrates involved in cytoskeletal remodeling and signal transduction.
Abbreviation	Recombinant Human CAPN1 protein
Storage	The shelf life is related to many factors, storage state, buffer ingredients, storage temperature and the stability of the protein itself. Generally, the shelf life of liquid form is 6 months at -20°C/-80°C. The shelf life of lyophilized form is 12 months at -20°C/-80°C.
Uniprot No.	P07384
Alias	Calcium-activated neutral proteinase 1 ;CANP 1Calpain mu-typeCalpain-1 large subunit;Cell proliferation-inducing gene 30 protein;Micromolar-calpain ;muCANP
Product Type	Recombinant Protein
Immunogen Species	Homo sapiens (Human)
Purity	Greater than 90% as determined by SDS-PAGE.
Sequence	MSEIITPVYCTGVSAQVQKQRARELGLGRHENAIKYLGGDYEQLRVRCCLQSG TLFRDEAFPPVPQSLGYKDLGPNSSKTYGIKWKRPTELLSNPQFIVDGGATRTDI CQGALGDCWLLAAIASLTLNDTLLHRVVPHGQSFQNGYAGIFHFQLWQFGEW VDVVDDLLPIKDGLVVFVHSAEGNEFWALLEKAYAKVNGSYEALSGGSTSE GFEDFTGGVTEWYELRKAPSDLYQIILKALERGSLLGCSIDISSVLDMEAITFKK LVKGHAYSVTGAKQVNYRGQVSLIRMRNPWGEVEWTGAWSDSSSEWNNV DPYERDQLRVKMEDGEFWMSEFRDFMREFTRLEICNLTPDALKSRTIRKWNTT LYEGTWRRGSTAGGCRNYPATFWVNPQFKIRLDETDDPDDYGDRESGCSFV LALMQKHRRRERRFRDMETIGFAVYEVPELVGQPAVHLKRDFFLANASRA RSEQFINLREVSTRFRLPPGEYVVVPSTFEPNKEGDFVLRFFSEKSAGTVELD DQIQANLPDEQVLSEEEIDENFKALFRQLAGEDMEISVKELRRTLNRRIISKHKDLR TKGFSLESCRSMVNLMDRDGNGLGLVEFNILWNRIRNYLSIFRKFDLKSGS MSAYEMRMAIESAGFKLNKKLYELIITRYSEPDLAVDNFVCCLVRLLETMFRF FKTLDTDLDGVVTFDLFKWLQLTMFA
Research Area	Cell Biology
Source	E.coli
Target Names	CAPN1
Expression Region	1-714aa
Notes	Repeated freezing and thawing is not recommended. Store working aliquots at 4°C for up to one week.
Tag Info	N-terminal 6xHis-tagged



Mol. Weight 85.9kDa

Protein Length Full Length

Image



(Tris-Glycine gel) Discontinuous SDS-PAGE (reduced) with 5% enrichment gel and 15% separation gel.

Reconstitution

We recommend that this vial be briefly centrifuged prior to opening to bring the contents to the bottom. Please reconstitute protein in deionized sterile water to a concentration of 0.1-1.0 mg/mL. We recommend to add 5-50% of glycerol (final concentration) and aliquot for long-term storage at -20°C/-80°C. Our default final concentration of glycerol is 50%. Customers could use it as reference.

Shelf Life

The shelf life is related to many factors, storage state, buffer ingredients, storage temperature and the stability of the protein itself. Generally, the shelf life of liquid form is 6 months at -20°C/-80°C. The shelf life of lyophilized form is 12 months at -20°C/-80°C.