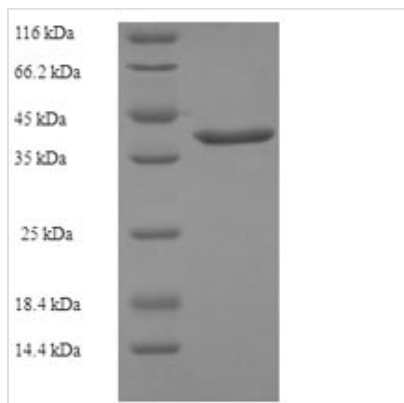




Recombinant Escherichia coli Cytidylate kinase (cmk)

Product Code	CSB-EP363865ENV
Relevance	ATP, dATP, and GTP are equally effective as phosphate donors. CMP and dCMP are the best phosphate acceptors.
Abbreviation	Recombinant E.coli cmk protein
Storage	The shelf life is related to many factors, storage state, buffer ingredients, storage temperature and the stability of the protein itself. Generally, the shelf life of liquid form is 6 months at -20°C/-80°C. The shelf life of lyophilized form is 12 months at -20°C/-80°C.
Uniprot No.	P0A6I0
Alias	Cytidine monophosphate kinase ;CMP kinaseProtein MssAp25
Product Type	Recombinant Protein
Immunogen Species	Escherichia coli (strain K12)
Purity	Greater than 90% as determined by SDS-PAGE.
Sequence	MTAIAPVITIDGPSGAGKGTLCAMAEALQWHLLDSGAIYRVLALAALHHHVDV ASEDALVPLASHLDVRFVSTNGNLEVILEGEDVSGEIRTQEVANAASQVAAFPR VREALLRRQRAFRELPLGLIADGRDMGTVVFPDAPVKIFLDASSEERAHRRMLQ LQEKGFVNFERLLAEIKERDDRDRNRAVAPLVPAADALVLDSTTLSIEQVIEKA LQYARQKLALA
Research Area	Others
Source	E.coli
Target Names	cmk
Expression Region	1-227aa
Notes	Repeated freezing and thawing is not recommended. Store working aliquots at 4°C for up to one week.
Tag Info	N-terminal 6xHis-SUMO-tagged
Mol. Weight	40.7kDa
Protein Length	Full Length
Image	



(Tris-Glycine gel) Discontinuous SDS-PAGE (reduced) with 5% enrichment gel and 15% separation gel.

Reconstitution

We recommend that this vial be briefly centrifuged prior to opening to bring the contents to the bottom. Please reconstitute protein in deionized sterile water to a concentration of 0.1-1.0 mg/mL. We recommend to add 5-50% of glycerol (final concentration) and aliquot for long-term storage at -20°C/-80°C. Our default final concentration of glycerol is 50%. Customers could use it as reference.

Shelf Life

The shelf life is related to many factors, storage state, buffer ingredients, storage temperature and the stability of the protein itself. Generally, the shelf life of liquid form is 6 months at -20°C/-80°C. The shelf life of lyophilized form is 12 months at -20°C/-80°C.