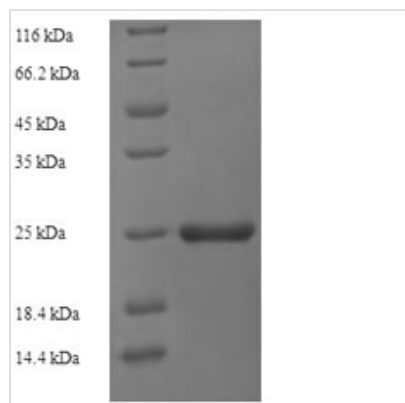




Recombinant Mycobacterium tuberculosis ESAT-6-like protein EsxH (esxH), partial

Product Code	CSB-EP363659MVZ
Abbreviation	Recombinant Mycobacterium tuberculosis esxH protein, partial
Storage	The shelf life is related to many factors, storage state, buffer ingredients, storage temperature and the stability of the protein itself. Generally, the shelf life of liquid form is 6 months at -20°C/-80°C. The shelf life of lyophilized form is 12 months at -20°C/-80°C.
Uniprot No.	P9WNK2
Alias	10 kDa antigen CFP7 ;CFP-7Low molecular weight protein antigen 7Protein TB10.4
Product Type	Recombinant Protein
Immunogen Species	Mycobacterium tuberculosis (strain CDC 1551 / Oshkosh)
Purity	Greater than 90% as determined by SDS-PAGE.
Sequence	SQIMYNYPAMLGHAGDMAGYAGTLQSLGAEIAVEQAALQSAWQGDGTGITYQAWQAQWNQAMEDLVRAYHAMSSTHEANTMAMMARDTAEAAKWGG
Research Area	Others
Source	E.coli
Target Names	esxH
Expression Region	2-96aa
Notes	Repeated freezing and thawing is not recommended. Store working aliquots at 4°C for up to one week.
Tag Info	N-terminal 6xHis-SUMO-tagged
Mol. Weight	26.3kDa
Protein Length	Partial

Image



(Tris-Glycine gel) Discontinuous SDS-PAGE (reduced) with 5% enrichment gel and 15% separation gel.

**Reconstitution**

We recommend that this vial be briefly centrifuged prior to opening to bring the contents to the bottom. Please reconstitute protein in deionized sterile water to a concentration of 0.1-1.0 mg/mL. We recommend to add 5-50% of glycerol (final concentration) and aliquot for long-term storage at -20°C/-80°C. Our default final concentration of glycerol is 50%. Customers could use it as reference.

Shelf Life

The shelf life is related to many factors, storage state, buffer ingredients, storage temperature and the stability of the protein itself. Generally, the shelf life of liquid form is 6 months at -20°C/-80°C. The shelf life of lyophilized form is 12 months at -20°C/-80°C.