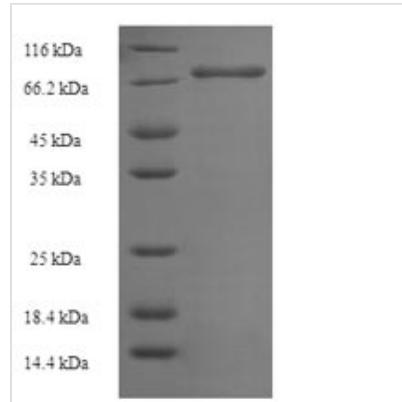




# Recombinant Human Notchless protein homolog 1 (NLE1)

<b>Product Code</b>	CSB-EP889125HU
<b>Relevance</b>	Plays a role in regulating Notch activity. Plays a role in regulating the expression of CDKN1A and several members of the Wnt pathway, probably via its effects on Notch activity. Required during bryogenesis for inner mass cell survival .
<b>Abbreviation</b>	Recombinant Human NLE1 protein
<b>Storage</b>	The shelf life is related to many factors, storage state, buffer ingredients, storage temperature and the stability of the protein itself. Generally, the shelf life of liquid form is 6 months at -20°C/-80°C. The shelf life of lyophilized form is 12 months at -20°C/-80°C.
<b>Uniprot No.</b>	Q9NVX2
<b>Product Type</b>	Recombinant Protein
<b>Immunogen Species</b>	Homo sapiens (Human)
<b>Purity</b>	≥ 90% as determined by SDS-PAGE.
<b>Sequence</b>	AAAVPDEAVARDVQRLLVQFQDEGGQLLGSFPDVPVDITPDRLQLVCNALLAQ EDPLPLAFFVHDAEIVSSLGKTLESQAVETEKVLDIYQPQAI FRVRAVTRCTSS LEGHSEAVISVAFSPTGKYLASGSGD TTVRFWDLSTETPHFTCKGHRHWVLSI SWSPDGRK LASGCKNGQILLWDPSTGKQVGR TLAGH SKWITGLSWEPLHAN PECRYVASSSKDGSVRIWDTTAGRCERILTGH TQSVTCLRWGGDGLLYSASQ DRTIKVWRAHDGVLCRTLQGHGHVNTMALSTDYALRTGAFEPAEASVNPQ DLQGSLQELKERALSRYNLVRGQGP ER LVSGSDDFTLFLWSPAEDKKPLTRM TGHQALINQVLFSPDSRIVASASFDKSIKLWDGRTGKYLASLRGHVAAVYQIAW SADSRLLVSGSSDSTLKVWDVKAQKLAMDLP GHADDEVYAVDWSPDGQRVAS GGKDKCLRIWRR
<b>Research Area</b>	Biochemicals
<b>Source</b>	E.coli
<b>Target Names</b>	NLE1
<b>Expression Region</b>	2-485aa
<b>Notes</b>	Repeated freezing and thawing is not recommended. Store working aliquots at 4°C for up to one week.
<b>Tag Info</b>	N-terminal 6xHis-SUMO-tagged
<b>Mol. Weight</b>	69.2kDa
<b>Protein Length</b>	Full Length of Mature Protein
<b>Image</b>	



(Tris-Glycine gel) Discontinuous SDS-PAGE (reduced) with 5% enrichment gel and 15% separation gel.

### Reconstitution

We recommend that this vial be briefly centrifuged prior to opening to bring the contents to the bottom. Please reconstitute protein in deionized sterile water to a concentration of 0.1-1.0 mg/mL. We recommend to add 5-50% of glycerol (final concentration) and aliquot for long-term storage at -20°C/-80°C. Our default final concentration of glycerol is 50%. Customers could use it as reference.

### Shelf Life

The shelf life is related to many factors, storage state, buffer ingredients, storage temperature and the stability of the protein itself.

Generally, the shelf life of liquid form is 6 months at -20°C/-80°C. The shelf life of lyophilized form is 12 months at -20°C/-80°C.