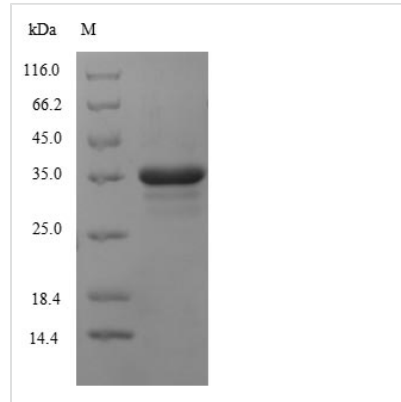




# Recombinant Human Cytochrome b-245 heavy chain (CYBB), partial

<b>Product Code</b>	CSB-EP006325HU1
<b>Relevance</b>	Critical component of the membrane-bound oxidase of phagocytes that generates superoxide. It is the terminal component of a respiratory chain that transfers single electrons from cytoplasmic NADPH across the plasma membrane to molecular oxygen on the exterior. Also functions as a voltage-gated proton channel that mediates the H <sup>+</sup> currents of resting phagocytes. It participates in the regulation of cellular pH and is blocked by zinc.
<b>Abbreviation</b>	Recombinant Human CYBB protein, partial
<b>Storage</b>	The shelf life is related to many factors, storage state, buffer ingredients, storage temperature and the stability of the protein itself. Generally, the shelf life of liquid form is 6 months at -20°C/-80°C. The shelf life of lyophilized form is 12 months at -20°C/-80°C.
<b>Uniprot No.</b>	P04839
<b>Alias</b>	CGD91-phox Cytochrome b(558) subunit beta
<b>Product Type</b>	Recombinant Protein
<b>Immunogen Species</b>	Homo sapiens (Human)
<b>Purity</b>	Greater than 90% as determined by SDS-PAGE.
<b>Sequence</b>	ERLVRFWRSQQKVVTIKVVTHPFKTIELQMKKKGFKMEVGQYIFVKCPKVSKL EWHPFTLTSAPEEDFFSIHIRIVGDWTEGLFNACGCDKQEFQDAWKLPKIAVD GPFGTASEDVFSYEVVMLVGAGIGVTPFASILKSVWYKYCNNATNLKLLKIYFY WLCRDTHAFEFWADLLQLLESQMQRNNAFLSYNIYLTGWDESQANHFVAVH HDEEKDVITGLKQKTLYGRPNWDNEFKTIASQHPNTRIGVFLCGPEALAEATLSK QSIENSESGPRGVHFIFNKENF
<b>Research Area</b>	Immunology
<b>Source</b>	E.coli
<b>Target Names</b>	CYBB
<b>Expression Region</b>	283-570aa
<b>Notes</b>	Repeated freezing and thawing is not recommended. Store working aliquots at 4°C for up to one week.
<b>Tag Info</b>	N-terminal 6xHis-tagged
<b>Mol. Weight</b>	37.2kDa
<b>Protein Length</b>	Partial
<b>Image</b>	



(Tris-Glycine gel) Discontinuous SDS-PAGE (reduced) with 5% enrichment gel and 15% separation gel.

### Reconstitution

We recommend that this vial be briefly centrifuged prior to opening to bring the contents to the bottom. Please reconstitute protein in deionized sterile water to a concentration of 0.1-1.0 mg/mL. We recommend to add 5-50% of glycerol (final concentration) and aliquot for long-term storage at -20°C/-80°C. Our default final concentration of glycerol is 50%. Customers could use it as reference.

### Shelf Life

The shelf life is related to many factors, storage state, buffer ingredients, storage temperature and the stability of the protein itself. Generally, the shelf life of liquid form is 6 months at -20°C/-80°C. The shelf life of lyophilized form is 12 months at -20°C/-80°C.