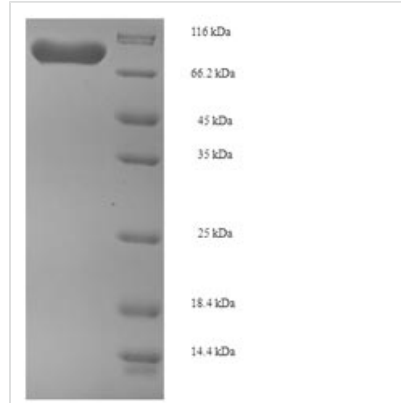




Recombinant Human Phosphoglucomutase-1 (PGM1)

Product Code	CSB-EP017866HU
Relevance	This enzyme participates in both the breakdown and synthesis of glucose.
Abbreviation	Recombinant Human PGM1 protein
Storage	The shelf life is related to many factors, storage state, buffer ingredients, storage temperature and the stability of the protein itself. Generally, the shelf life of liquid form is 6 months at -20°C/-80°C. The shelf life of lyophilized form is 12 months at -20°C/-80°C.
Uniprot No.	P36871
Alias	Glucose phosphomutase 1
Product Type	Recombinant Protein
Immunogen Species	Homo sapiens (Human)
Purity	Greater than 90% as determined by SDS-PAGE.
Sequence	MVKIVTVKTQAYQDQKPGTSGLRKRVKVFQSSANYAENFIQSIISTVEPAQRQE ATLVVGGDGRFYMKEAIQLIARIAAANGIGRLVIGQNGILSTPAVSCIIRKIKAIIGG IILTASHNPGGPNNGDFGIKFNISNGGPAPEAITDKIFQISKTIIEYAVCPDLKVDL GVLGKQQFDLENKFKPFTVEIVDSVEAYATMLRSIFDFSALKELLSGPNRLKIRI DAMHGVVGPYVKILCEELGAPANSAVNCVPLEDFGGHHPDPNLTYAADLVE TMKSGEHDFGAAFDGDGDRNMILGKHGFFVNPSSVAVIAANIFSIPYFQQTG VRGFARSMPTSGALDRVASATKIALYETPTGWKFFGNLMDASKLSLCGEESF GTGSDHIREKDGLWAVLAWLSILATRKQSVEDILKDHVQKYGRNFFTRYDYEE VEAEGANKMMKDLEALMFDERSFVGKQFSANDKVYTVEKADNFEYSDPVDGSI SRNQGLRLIFTDGSRIVFRLSGTGSAGATIRLYIDSYEKDVAKINQDPQVMLAPL ISIALKVSQQLQERTGRTAPTIVT
Research Area	Metabolism
Source	E.coli
Target Names	PGM1
Expression Region	1-562aa
Notes	Repeated freezing and thawing is not recommended. Store working aliquots at 4°C for up to one week.
Tag Info	N-terminal 6xHis-SUMO-tagged
Mol. Weight	77.4kDa
Protein Length	Full Length
Image	



(Tris-Glycine gel) Discontinuous SDS-PAGE (reduced) with 5% enrichment gel and 15% separation gel.

Reconstitution

We recommend that this vial be briefly centrifuged prior to opening to bring the contents to the bottom. Please reconstitute protein in deionized sterile water to a concentration of 0.1-1.0 mg/mL. We recommend to add 5-50% of glycerol (final concentration) and aliquot for long-term storage at -20°C/-80°C. Our default final concentration of glycerol is 50%. Customers could use it as reference.

Shelf Life

The shelf life is related to many factors, storage state, buffer ingredients, storage temperature and the stability of the protein itself. Generally, the shelf life of liquid form is 6 months at -20°C/-80°C. The shelf life of lyophilized form is 12 months at -20°C/-80°C.