



# Recombinant Mouse Calpain-1 catalytic subunit (Capn1)

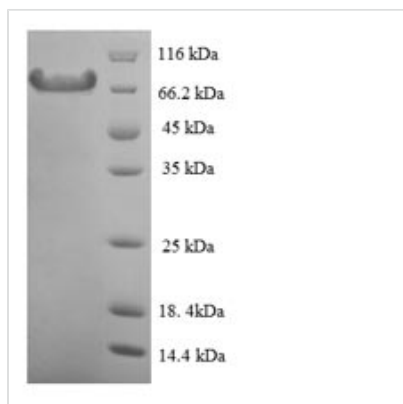
<b>Product Code</b>	CSB-EP004490MO
<b>Relevance</b>	Calcium-regulated non-lysosomal thiol-protease which catalyze limited proteolysis of substrates involved in cytoskeletal remodeling and signal transduction.
<b>Abbreviation</b>	Recombinant Mouse Capn1 protein
<b>Storage</b>	The shelf life is related to many factors, storage state, buffer ingredients, storage temperature and the stability of the protein itself. Generally, the shelf life of liquid form is 6 months at -20°C/-80°C. The shelf life of lyophilized form is 12 months at -20°C/-80°C.
<b>Uniprot No.</b>	O35350
<b>Alias</b>	Calcium-activated neutral proteinase 1 ;CANP 1;Calpain mu-type;Calpain-1 large subunit;Micromolar-calpain ;muCANP
<b>Product Type</b>	Recombinant Protein
<b>Immunogen Species</b>	Mus musculus (Mouse)
<b>Purity</b>	≥ 90% as determined by SDS-PAGE.
<b>Sequence</b>	MTEELITPVYCTGVSAQVQKKRDKELGLGRHENAIKYLGGDYETLRARCLQSG VLFQDEAFPPVSHSLGFKELGPHSSKTYGIKWKRPTELMSNPQFIVDGATRDI CQGALGDCWLLAAIASLTLNETILHRVVPYQQSFQDGYAGIFHFQLWQFGEWV DVVIDDLLPTKDGKLVFVHSAQGNFWSALLEKAYAKVNGSYEALSGGCTSEA FEDFTGGVTEWYDLQKAPSDLYQIILKALERGSLLGCSINISDIRDLEAITFKNLV RGHAYSVTGAKQVTYQQQRVNLIRMRNPWGEVEWKGPWSDSSYEWNKVDP YEREQLRVKMEDGEFWMSFRDFIREFTKLEICNLTPDALKSRTLNRNWNTTFYE GTWRRGSTAGGCRNYPATFWVNPQFKIRLEEVDADDYDNRESGCSFLLAL MQKHRRRERRFRDMMETIGFAVYQVPRELAGQPVHLKRDFFLANASRAQSE HFINLREVSNRIRLPPGEYIVVPSTFEPNKEGDFLLRFFSEKKAGTQELDDQIQA NLPDEKVLSEEEIDDNFKTLFSKLAGDDMEISVKELQILNRIISKHKDLRTNGFS LESCRSMVNLMDRDGNGKLGLEFVNILWNRIRNYLTIFRKFDLKDSGSMSAYE MRMAIEAAGFKLNKKLHELITRYSEPD LAVDFDNFVCCCLVRLETMFRFFKLLDT DLDGVVTFDLFKWLQLTMFA
<b>Research Area</b>	Others
<b>Source</b>	E.coli
<b>Target Names</b>	Capn1
<b>Expression Region</b>	1-713aa
<b>Notes</b>	Repeated freezing and thawing is not recommended. Store working aliquots at 4°C for up to one week.
<b>Tag Info</b>	N-terminal 6xHis-tagged



**Mol. Weight** 86.1kDa

**Protein Length** Full Length

**Image**



(Tris-Glycine gel) Discontinuous SDS-PAGE (reduced) with 5% enrichment gel and 15% separation gel.

**Reconstitution**

We recommend that this vial be briefly centrifuged prior to opening to bring the contents to the bottom. Please reconstitute protein in deionized sterile water to a concentration of 0.1-1.0 mg/mL. We recommend to add 5-50% of glycerol (final concentration) and aliquot for long-term storage at -20°C/-80°C. Our default final concentration of glycerol is 50%. Customers could use it as reference.

**Shelf Life**

The shelf life is related to many factors, storage state, buffer ingredients, storage temperature and the stability of the protein itself. Generally, the shelf life of liquid form is 6 months at -20°C/-80°C. The shelf life of lyophilized form is 12 months at -20°C/-80°C.