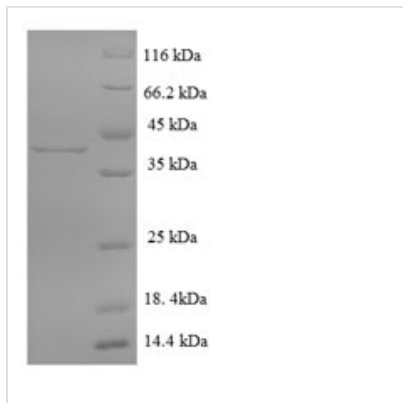




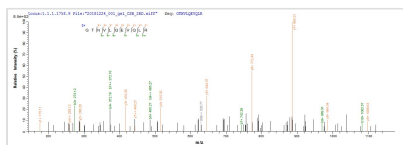
Recombinant Mouse Cathepsin G (Ctsg)

Product Code	CSB-EP006190MO
Relevance	This vimentin-specific protease may regulate the reorganization of vimentin filaments, occurring during cell differentiation, movement and mitosis.
Abbreviation	Recombinant Mouse Ctsg protein
Storage	The shelf life is related to many factors, storage state, buffer ingredients, storage temperature and the stability of the protein itself. Generally, the shelf life of liquid form is 6 months at -20°C/-80°C. The shelf life of lyophilized form is 12 months at -20°C/-80°C.
Uniprot No.	P28293
Alias	Vimentin-specific protease ;VSP
Product Type	Recombinant Protein
Immunogen Species	Mus musculus (Mouse)
Purity	≥ 90% as determined by SDS-PAGE.
Sequence	IIGGREARPHSYPYMAFLLIQSPEGLSACGGFLVREDFVLTAAHCLGSSINVTL GAHNIQMRERTQQLITVLRAIRHPDYNPQNIRNDIMLLQLRRRARRSGSVKPVA LPQASKKLQPGDLCTVAGWGRVVSQSRGTNVLQEVQLRVQMDQMCANRFQF YNSQTQICVGNPRERKSAFRGDSGGPLVCSNVAQQGIVSYGSNNGNPPAVFTK IQSFMPWIKRTMRRFAPRYQRPANLSLQAQT
Research Area	Others
Source	E.coli
Target Names	Ctsg
Expression Region	21-261aa
Notes	Repeated freezing and thawing is not recommended. Store working aliquots at 4°C for up to one week.
Tag Info	N-terminal 6xHis-SUMO-tagged
Mol. Weight	42.9kDa
Protein Length	Full Length of Mature Protein

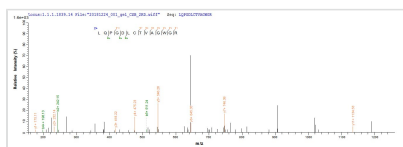
Image



(Tris-Glycine gel) Discontinuous SDS-PAGE (reduced) with 5% enrichment gel and 15% separation gel.



Based on the SEQUEST from database of E.coli host and target protein, the LC-MS/MS Analysis result of CSB-EP006190MO could indicate that this peptide derived from E.coli-expressed Mus musculus (Mouse) Ctsg.



Based on the SEQUEST from database of E.coli host and target protein, the LC-MS/MS Analysis result of CSB-EP006190MO could indicate that this peptide derived from E.coli-expressed Mus musculus (Mouse) Ctsg.

Reconstitution

We recommend that this vial be briefly centrifuged prior to opening to bring the contents to the bottom. Please reconstitute protein in deionized sterile water to a concentration of 0.1-1.0 mg/mL. We recommend to add 5-50% of glycerol (final concentration) and aliquot for long-term storage at -20°C/-80°C. Our default final concentration of glycerol is 50%. Customers could use it as reference.

Shelf Life

The shelf life is related to many factors, storage state, buffer ingredients, storage temperature and the stability of the protein itself. Generally, the shelf life of liquid form is 6 months at -20°C/-80°C. The shelf life of lyophilized form is 12 months at -20°C/-80°C.