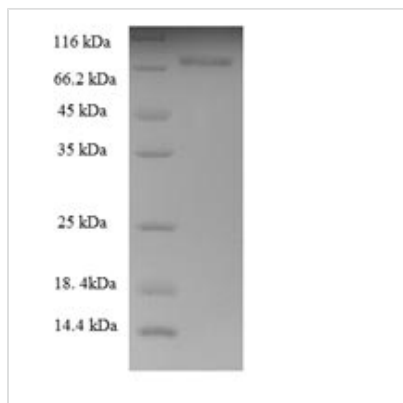




Recombinant Human Keratin, type II cytoskeletal 8 (KRT8), partial

Product Code	CSB-EP012574HU
Relevance	Together with KRT19, helps to link the contractile apparatus to dystrophin at the costameres of striated muscle.
Abbreviation	Recombinant Human KRT8 protein, partial
Storage	The shelf life is related to many factors, storage state, buffer ingredients, storage temperature and the stability of the protein itself. Generally, the shelf life of liquid form is 6 months at -20°C/-80°C. The shelf life of lyophilized form is 12 months at -20°C/-80°C.
Uniprot No.	P05787
Product Type	Recombinant Proteins
Immunogen Species	Homo sapiens (Human)
Purity	≥ 90% as determined by SDS-PAGE.
Sequence	SIRVTQKSYKVVSTSGPRAFSSRSYTSRSGPGRISSSSSFSRVGSSNFRGGLGGG YGGASGMGGITAVTVNQSLLSPLVLEVDPNIQAVRTQEKEQIKTLNKNKFASFID KVRFLQKQNKMLETKWSSLQKKTARSNMDNMFESYINLRRQLETGLGQEKL KLEAELGNMQGLVEDFKNKYEDEINKRTEMENEFVLIKKDVDEAYMKNKVELES RLEGLTDEINFLRQLYEEEIRELQSQISDTSVVLMSDMSRSLDMSIAAEVKAQY EDIANRSRAEAESMYQIKYEELQSLAGKHGDDLRRRTKTEISEMNRNISRLLQAEI EGLKGQRASLEAAIADAEQRGELAIKDANAKLSELEAALQRAKQDMARQLREY QELMNVKLALDIEIATYRKLLLEGESRLESGMQNMSIHTKTTSGYAGGLSSAYG GLTSPGLSYSLGSSFGSGAGSSSFRTSSSRVVVKKIETRDGKLVSESSDVL PK
Source	E.coli
Target Names	KRT8
Expression Region	2-483aa
Notes	Repeated freezing and thawing is not recommended. Store working aliquots at 4°C for up to one week.
Tag Info	N-terminal 6xHis-SUMO-tagged
Mol. Weight	66.5 kDa
Protein Length	partial
Image	



(Tris-Glycine gel) Discontinuous SDS-PAGE (reduced) with 5% enrichment gel and 15% separation gel.

Shelf Life

The shelf life is related to many factors, storage state, buffer ingredients, storage temperature and the stability of the protein itself.

Generally, the shelf life of liquid form is 6 months at -20°C/-80°C. The shelf life of lyophilized form is 12 months at -20°C/-80°C.