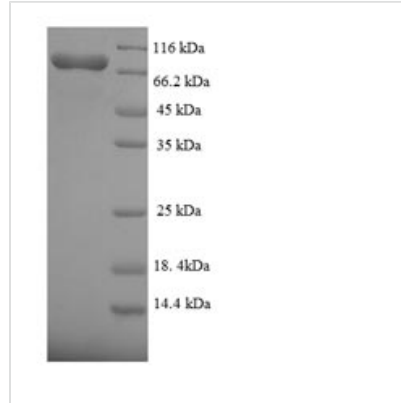


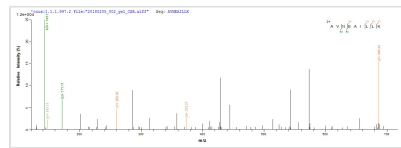


Recombinant Human Fanconi anemia group C protein (FANCC)

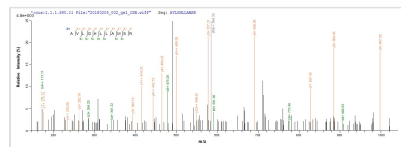
Product Code	CSB-EP008415HU
Relevance	DNA repair protein that may operate in a postreplication repair or a cell cycle checkpoint function. May be implicated in interstrand DNA cross-link repair and in the maintenance of normal chromosome stability. Upon IFNG induction, may facilitate STAT1 activation by recruiting STAT1 to IFNGR1.
Abbreviation	Recombinant Human FANCC protein
Storage	The shelf life is related to many factors, storage state, buffer ingredients, storage temperature and the stability of the protein itself. Generally, the shelf life of liquid form is 6 months at -20°C/-80°C. The shelf life of lyophilized form is 12 months at -20°C/-80°C.
Uniprot No.	Q00597
Product Type	Recombinant Protein
Immunogen Species	Homo sapiens (Human)
Purity	Greater than 90% as determined by SDS-PAGE.
Sequence	MAQDSVDLSCDYQFWMQKLSVWDQASTLETQQDTCLHVAQFQEF LRKMYEA LKEMDSNTVIERFPTIGQLLAKACWNPFILAYDESQLIWLCLCCLINKEPQNSG QSKLNSWIQGVLSHILSALRFDKEVALFTQGLGYAPIDYYPGLLKNMVLSLASE LRENHLNGFNTQRRMAPERVASLSRVCPPLITLTDVDPLVEALLICHGREPQEI LQPEFFEAVNEAILLKKISLPMSAVVCLWLRHLP SLEKAMLHLFEKLISSE RNCL RRIECFIKDSSLPQAACHPAIFRVVDEMFR CALLET DGALEIIATI QVFTQCFVEA LEKASKQLRFALKTYFPY TSPSLAMVLLQDPQDIPRGHWLQTLKHISELLREAV EDQTHGSCGGPFESWFLFIHFGGWAEMVAEQLLMSAAEPPTALLWLLAFYYG PRDGRQQRAQTMVQVKAVLGHLLAMSRSSSL SAQDLQTVAGQGTD TDLRAP AQQ LIRHLLLNFL LWAPGGHTIAWDVITLMAHTAEITHEIIGFLDQTL YRWNRLGI ESPRSEKLARELLKELRTQV
Research Area	Epigenetics and Nuclear Signaling
Source	E.coli
Target Names	FANCC
Expression Region	1-558aa
Notes	Repeated freezing and thawing is not recommended. Store working aliquots at 4°C for up to one week.
Tag Info	N-terminal 6xHis-SUMO-tagged
Mol. Weight	79.4kDa
Protein Length	Full Length
Image	



(Tris-Glycine gel) Discontinuous SDS-PAGE (reduced) with 5% enrichment gel and 15% separation gel.



Based on the SEQUEST from database of E.coli host and target protein, the LC-MS/MS Analysis result of CSB-EP008415HU could indicate that this peptide derived from E.coli-expressed Homo sapiens (Human) FANCC.



Based on the SEQUEST from database of E.coli host and target protein, the LC-MS/MS Analysis result of CSB-EP008415HU could indicate that this peptide derived from E.coli-expressed Homo sapiens (Human) FANCC.

Reconstitution

We recommend that this vial be briefly centrifuged prior to opening to bring the contents to the bottom. Please reconstitute protein in deionized sterile water to a concentration of 0.1-1.0 mg/mL. We recommend to add 5-50% of glycerol (final concentration) and aliquot for long-term storage at -20°C/-80°C. Our default final concentration of glycerol is 50%. Customers could use it as reference.

Shelf Life

The shelf life is related to many factors, storage state, buffer ingredients, storage temperature and the stability of the protein itself.

Generally, the shelf life of liquid form is 6 months at -20°C/-80°C. The shelf life of lyophilized form is 12 months at -20°C/-80°C.