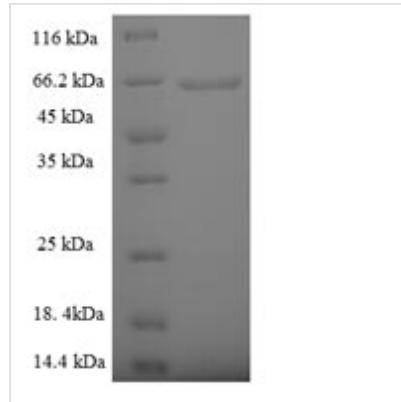




Recombinant Human 5'-3' exonuclease PLD4 (PLD4), partial

Product Code	CSB-EP839298HU
Abbreviation	Recombinant Human PLD4 protein, partial
Storage	The shelf life is related to many factors, storage state, buffer ingredients, storage temperature and the stability of the protein itself. Generally, the shelf life of liquid form is 6 months at -20°C/-80°C. The shelf life of lyophilized form is 12 months at -20°C/-80°C.
Uniprot No.	Q96BZ4
Product Type	Recombinant Proteins
Immunogen Species	Homo sapiens (Human)
Purity	≥ 90% as determined by SDS-PAGE.
Sequence	WQVPRPPTWGQVQPKDVPRSWEHGSSPAWEPLAEARQQRDSCQLVLVES IPQDLPSAAGSPSAQPLGQAWLQLLDTAQESVHVASYWSLTGPDIGVNDSS SQLGEALLQKLQQLLGRNISLAVATSSPTLARTSTDLQVLAARGAHVRQVPMG RLTRGVLHSKFWVVDGRHIYMGSANMDWRSLSLQVKELGAVIYNCSHLAQDLE KTFQTYWVLGVPKAVLPKTWPQNFSSHFNRFPFHGLFDGVPPTTAYFSASPP ALCPQGRTRDLEALLAVMGSAQEFIYASVMEYFPTTRFSHPTRYWPVLDNALR AAAFGKGVRVRLLVGCGLNTDPTMFPYLRSLQALSNPAAANVSVDVKVFIVPVG NHSNIPFSRVNHSKFMVTEKAAAYIGTSNWSYEDYFSSTAGVGLVVTQSPGAQP AGATVQEQLRQLFERDWSSRYAVGLDGGQAPGQDCVWQG
Research Area	Cardiovascular
Source	E.coli
Target Names	PLD4
Expression Region	52-506aa
Notes	Repeated freezing and thawing is not recommended. Store working aliquots at 4°C for up to one week.
Tag Info	N-terminal 6xHis-SUMO-tagged
Mol. Weight	66.0kDa
Protein Length	Partial
Image	



(Tris-Glycine gel) Discontinuous SDS-PAGE (reduced) with 5% enrichment gel and 15% separation gel.

Shelf Life

The shelf life is related to many factors, storage state, buffer ingredients, storage temperature and the stability of the protein itself.

Generally, the shelf life of liquid form is 6 months at -20°C/-80°C. The shelf life of lyophilized form is 12 months at -20°C/-80°C.