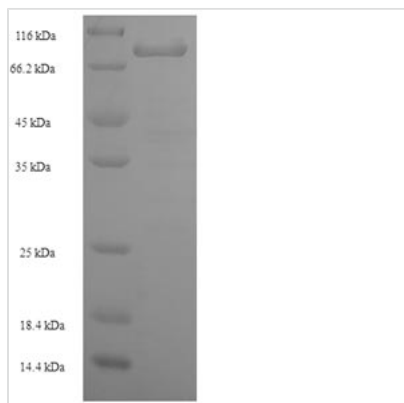




Recombinant Human Leucine-rich repeat neuronal protein 1 (LRRN1), partial

Product Code	CSB-EP747638HU
Abbreviation	Recombinant Human LRRN1 protein, partial
Storage	The shelf life is related to many factors, storage state, buffer ingredients, storage temperature and the stability of the protein itself. Generally, the shelf life of liquid form is 6 months at -20°C/-80°C. The shelf life of lyophilized form is 12 months at -20°C/-80°C.
Uniprot No.	Q6UXK5
Alias	Neuronal leucine-rich repeat protein 1 ;NLRR-1
Product Type	Recombinant Protein
Immunogen Species	Homo sapiens (Human)
Purity	Greater than 90% as determined by SDS-PAGE.
Sequence	SIQNSECPQLCVCEIRPWFTPQSTYREATTVDCNDLRLTRIPSNLSSDTQVLLL QSNNAIKTVDELQQLFNLTDELFSQNNFTNIKEVGLANLTQLTTLHLEENQITEM TDYCLQDLSNLQELYINHNIQISTISAHAFAGLKNLLRLHLNSNKLKVIDSRWFDS TPNLEILMIGENPVGILDMNFKPLANLRSLVLAGMYLTDIPGNALVGLDSLESLS FYDNKLVKVPQLALQKVPNLKFLDLNKNPIHKIQEGDFKNMLRLKELGINNMGE LVSVDRYALDNLPELTKLEATNNPKLSYIHRFAFRSVPAAESLMLNNAALNAIYQ KTVESLPNLREISHSNPLRCDCVIHWINSNKTNIRFMEPLSMFCAMPPEYKGGH QVKEVLIQDSSEQCLPMISHDSFPNRLNVDIGTTVFLDCRAMAEPEPEIYWVTP IGNKITVETLSDKYKLSSEGTLISNIQIEDSGRYTCVAQNVQGADTRVATIKVN GTLLDGTQVLKIYVKQTESHSILVSWKVNNSVMTSNLKWSSATMKIDNPHITYT ARVPVDVHEYNLTHLQPSTDYEVCLTVSNIHQQTQKSCVNVTTKNAFAVDIS DQETSTA
Research Area	Cell Biology
Source	E.coli
Target Names	LRRN1
Expression Region	26-631aa
Notes	Repeated freezing and thawing is not recommended. Store working aliquots at 4°C for up to one week.
Tag Info	N-terminal 6xHis-SUMO-tagged
Mol. Weight	84.3kDa
Protein Length	Extracellular Domain
Image	



(Tris-Glycine gel) Discontinuous SDS-PAGE (reduced) with 5% enrichment gel and 15% separation gel.

Reconstitution

We recommend that this vial be briefly centrifuged prior to opening to bring the contents to the bottom. Please reconstitute protein in deionized sterile water to a concentration of 0.1-1.0 mg/mL. We recommend to add 5-50% of glycerol (final concentration) and aliquot for long-term storage at -20°C/-80°C. Our default final concentration of glycerol is 50%. Customers could use it as reference.

Shelf Life

The shelf life is related to many factors, storage state, buffer ingredients, storage temperature and the stability of the protein itself. Generally, the shelf life of liquid form is 6 months at -20°C/-80°C. The shelf life of lyophilized form is 12 months at -20°C/-80°C.