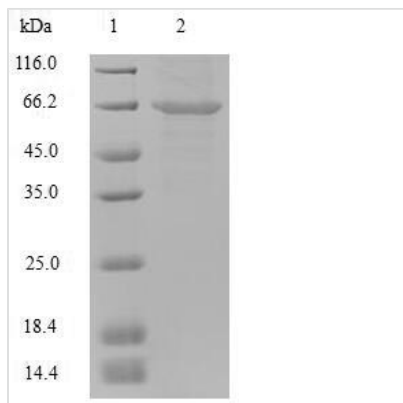


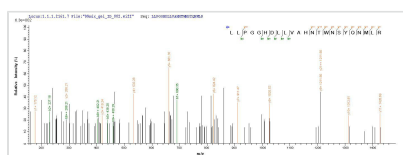


Recombinant Mouse Putative phospholipase B-like 2 (Plbd2)

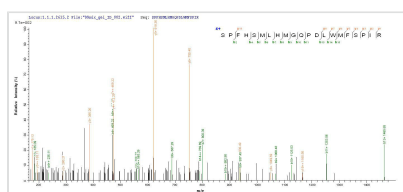
Product Code	CSB-MP663623MO
Relevance	Putative phospholipase.
Abbreviation	Recombinant Mouse Plbd2 protein
Storage	The shelf life is related to many factors, storage state, buffer ingredients, storage temperature and the stability of the protein itself. Generally, the shelf life of liquid form is 6 months at -20°C/-80°C. The shelf life of lyophilized form is 12 months at -20°C/-80°C.
Uniprot No.	Q3TCN2
Alias	66.3 kDa protein;76 kDa protein ;p76LAMA-like protein 2;Lamina ancestor homolog 2;Phospholipase B domain-containing protein 2
Product Type	Recombinant Protein
Immunogen Species	Mus musculus (Mouse)
Purity	Greater than 90% as determined by SDS-PAGE.
Sequence	LPTLGPGWQRQNPDPVSRTRSLLLDAASGQLRLEDGFHPDAVAWANLTNAI RETGWAYLDLSTNGRYNDSLQAYAAGVVEASVSEELIYMHWMNTVVNYCGP FEYEVGYCEKLNFLLEANLEWMQREMELNPDSYWHQVRLTLLQLKGLDSY EGRLTFPTGRFTIKPLGFLLLQISGDLEDLEPALNKTNTKPSLGSGLSALIKLLP GGHDLLVAHNTWNSYQNMLRIIKKYRLQFREGPQEEYPLVAGNNLVFSSYPG TIFSGDDFYILGSLVTLETTIGNKNPALWKYVQPQGCVLEWIRNVVANRLALD GATWADVFKRFNSGTYNQWMIVDYKAFLPNGPSPGSRVLTILEQIPGMVVV ADKTAELYKTTYWASYNIPYFETVFNASGLQALVAQYGDWFSYTKNPRAKIFQ RDQSLVEDMDAMVRLMRYNDFLHDPLSLCEACNPKPNAENAIARSIDLNPAN GSYPFQALHQRAGGIDVKVTSFTLAKYMSMLAASGPTWDQCPPFQWSKSP FHSMMLHMGQPDLWMFSPIRVPWD
Research Area	Others
Source	Mammalian cell
Target Names	Plbd2
Expression Region	47-594aa
Notes	Repeated freezing and thawing is not recommended. Store working aliquots at 4°C for up to one week.
Tag Info	N-terminal 6xHis-tagged
Mol. Weight	65.9kDa
Protein Length	Full Length of Mature Protein
Image	



(Tris-Glycine gel) Discontinuous SDS-PAGE (reduced) with 5% enrichment gel and 15% separation gel.



Based on the SEQUEST from database of Mammalian Cell host and target protein, the LC-MS/MS Analysis result of CSB-MP663623MO could indicate that this peptide derived from Mammalian Cell-expressed Mus musculus (Mouse) Plbd2.



Based on the SEQUEST from database of Mammalian Cell host and target protein, the LC-MS/MS Analysis result of CSB-MP663623MO could indicate that this peptide derived from Mammalian Cell-expressed Mus musculus (Mouse) Plbd2.

Reconstitution

We recommend that this vial be briefly centrifuged prior to opening to bring the contents to the bottom. Please reconstitute protein in deionized sterile water to a concentration of 0.1-1.0 mg/mL. We recommend to add 5-50% of glycerol (final concentration) and aliquot for long-term storage at -20°C/-80°C. Our default final concentration of glycerol is 50%. Customers could use it as reference.

Shelf Life

The shelf life is related to many factors, storage state, buffer ingredients, storage temperature and the stability of the protein itself. Generally, the shelf life of liquid form is 6 months at -20°C/-80°C. The shelf life of lyophilized form is 12 months at -20°C/-80°C.