



Human Lactoferrin

Product Code CSB-NP008701h

Relevance Lactoferrin is a glycoprotein present in most human mucosal secretions, including human milk. Lactoferrin is bacteriostatic in low iron media and, in some settings, bactericidal. Lactoferrin impairs ability of *Shigella flexneri* serotype 5 strain M90T to invade HeLa cells. To determine the mechanism by which lactoferrin decreases invasiveness of *Shigella* organisms, its effect on the major virulence proteins responsible for bacterial uptake by host cells was evaluated. Lactoferrin induced degradation of invasion plasmid antigens IpaB and, to a lesser extent, IpaC, the key proteins responsible for bacteria-directed phagocytosis by mammalian cells.

Storage Aliquot and store at -20°C or -80°C. Avoid repeated freeze/thaw cycles.

Tested Applications ELISA, WB, SDS-PAGE

Form Liquid

Storage Buffer PBS, pH 7.4

Alias N/A

Product Type Native Protein

Sensitivity Not test

Purity >95% (SDS-PAGE)

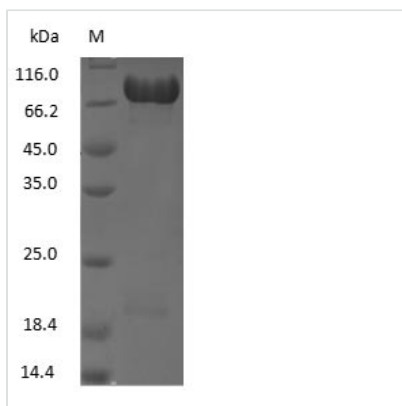
Sequence Full length protein

Research Area Cardiovascular

Source Purified from Human milk

Protein Names Human Lactoferrin

Image



(Tris-Glycine gel) Discontinuous SDS-PAGE (reduced) with 5% enrichment gel and 15% separation gel.