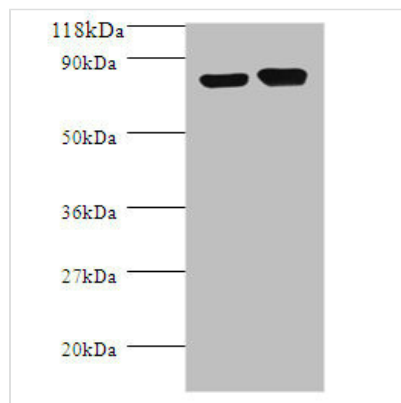




IdcC Antibody

Product Code	CSB-PA16349A0Rb
Storage	Upon receipt, store at -20°C or -80°C. Avoid repeated freeze.
Uniprot No.	P52095
Immunogen	Recombinant Escherichia coli Constitutive lysine decarboxylase protein (1-713AA)
Raised In	Rabbit
Species Reactivity	Escherichia coli
Tested Applications	ELISA, WB; Recommended dilution: WB:1:1000-1:5000
Form	Liquid
Conjugate	Non-conjugated
Storage Buffer	Preservative: 0.03% Proclin 300 Constituents: 50% Glycerol, 0.01M PBS, PH 7.4
Purification Method	>95%, Protein G purified
Isotype	IgG
Clonality	Polyclonal
Alias	Constitutive lysine decarboxylase (LDC) (EC 4.1.1.18), IdcC, Idc IdcH
Immunogen Species	Escherichia coli
Research Area	Others
Target Names	IdcC

Image



Western blot

All lanes: Lysine decarboxylase, constitutive antibody at 2µg/ml + DH5a whole cell lysate

Secondary

Goat polyclonal to rabbit IgG at 1/10000 dilution

Predicted band size: 81 kDa

Observed band size: 81 kDa

Usage

For Research Use Only. Not for use in diagnostic or therapeutic procedures.