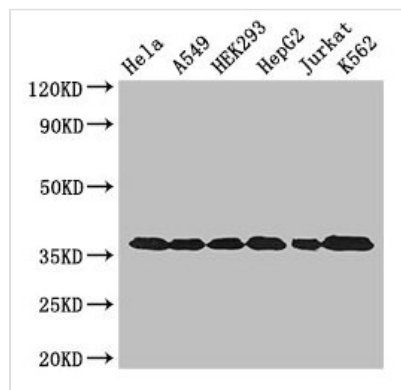




GAPDH Antibody

| | |
|----------------------------|---|
| Product Code | CSB-PA00025A0Rb |
| Storage | Upon receipt, store at -20°C or -80°C. Avoid repeated freeze. |
| Uniprot No. | P04406 |
| Immunogen | Recombinant Human Glyceraldehyde-3-phosphate dehydrogenase protein (3-335AA) |
| Raised In | Rabbit |
| Species Reactivity | Human |
| Tested Applications | ELISA, WB, IHC, IF; Recommended dilution: WB:1:500-1:5000, IHC:1:20-1:200, IF:1:50-1:200 |
| Form | Liquid |
| Conjugate | Non-conjugated |
| Storage Buffer | Preservative: 0.03% Proclin 300 Constituents: 50% Glycerol, 0.01M PBS, PH 7.4 |
| Purification Method | >95%, Protein G purified |
| Isotype | IgG |
| Clonality | Polyclonal |
| Alias | Glyceraldehyde-3-phosphate dehydrogenase (GAPDH) (EC 1.2.1.12) (Peptidyl-cysteine S-nitrosylase GAPDH) (EC 2.6.99.-), GAPDH, GAPD |
| Immunogen Species | Homo sapiens (Human) |
| Research Area | Neuroscience |
| Target Names | GAPDH |

Image



Western Blot

Positive WB detected in: HeLa whole cell lysate, A549 whole cell lysate, HEK293 whole cell lysate, HepG2 whole cell lysate, Jurkat whole cell lysate, K562 whole cell lysate

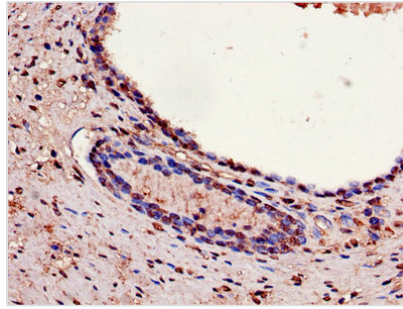
All lanes: GAPDH antibody at 3µg/ml

Secondary

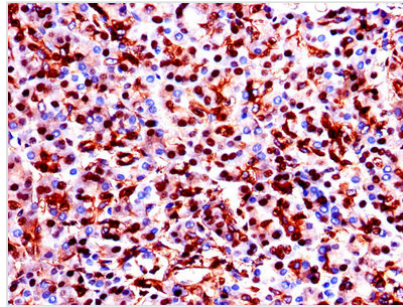
Goat polyclonal to rabbit IgG at 1/50000 dilution

Predicted band size: 37, 32 kDa

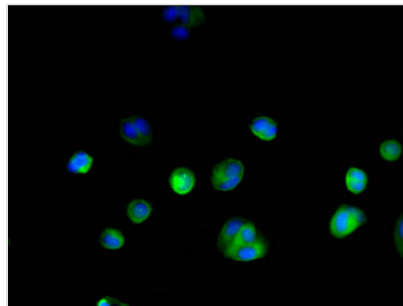
Observed band size: 37 kDa



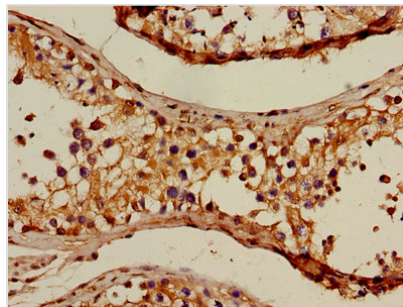
Immunohistochemistry of paraffin-embedded human prostate cancer using CSB-PA00025A0Rb at dilution of 1:100



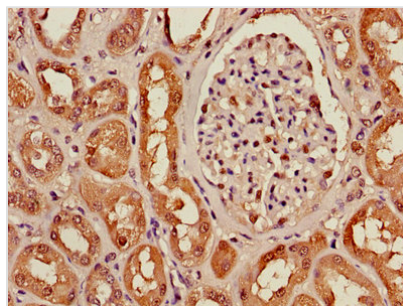
Immunohistochemistry of paraffin-embedded human pancreatic tissue using CSB-PA00025A0Rb at dilution of 1:100



Immunofluorescent analysis of MCF-7 cells using CSB-PA00025A0Rb at dilution of 1:100 and Alexa Fluor 488-conjugated AffiniPure Goat Anti-Rabbit IgG(H+L)



Immunohistochemistry of paraffin-embedded human testis tissue using CSB-PA00025A0Rb at dilution of 1:100



Immunohistochemistry of paraffin-embedded human kidney tissue using CSB-PA00025A0Rb at dilution of 1:100