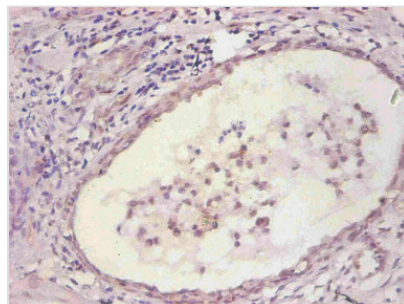




IL6 Monoclonal Antibody

Product Code	CSB-MA067571A0m
Storage	Upon receipt, store at -20°C or -80°C. Avoid repeated freeze.
Immunogen	Recombinant Human Interleukin-6
Raised In	mouse
Species Reactivity	Human
Specificity	specific for human Interleukin-6 denatured and native forms
Tested Applications	ELISA, IHC; Recommended dilution: IHC:1:50-1:500
Relevance	Cytokine with a wide variety of biological functions. It is a potent inducer of the acute phase response. Plays an essential role in the final differentiation of B-cells into Ig-secreting cells Involved in lymphocyte and monocyte differentiation. It induces myeloma and plasmacytoma growth and induces nerve cells differentiation Acts on B-cells, T-cells, hepatocytes, hematopoietic progenitor cells and cells of the CNS. Also acts as a myokine. It is discharged into the bloodstream after muscle contraction and acts to increase the breakdown of fats and to improve insulin resistance.
Form	liquid
Conjugate	Non-conjugated
Storage Buffer	Preservative: 0.03% Proclin 300Constituents: 50% Glycerol, 0.01M PBS, PH 7.4
Purification Method	>95% by Protein G purified
Isotype	IgG1
Clonality	monoclonal
Alias	B-cell stimulatory factor 2,BSF-2,CTL differentiation factor,CDF,Hybridoma growth factor,Interferon beta-2,IFN-beta-2
Product Type	Monoclonal Antibody
Immunogen Species	Homo sapiens (Human)
Accession NO.	6D4H9

Image



Immunohistochemical of paraffin-embedded human prostate tissue using CSB-MA067571A0m at dilution of 1:200