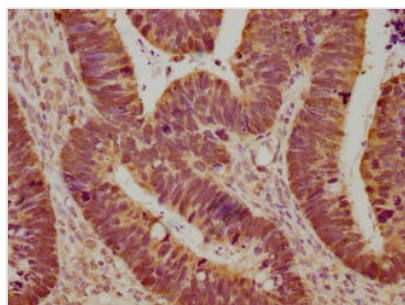




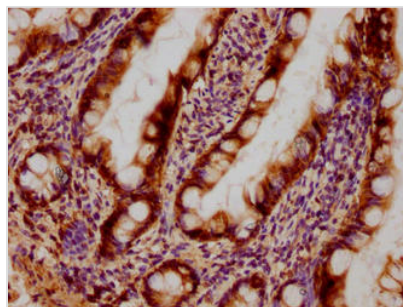
LGALS3 Monoclonal Antibody

Product Code	CSB-MA0128871A0m
Storage	Upon receipt, store at -20°C or -80°C. Avoid repeated freeze.
Immunogen	Recombinant Human Galectin 3(GAL-3)
Raised In	Mouse
Species Reactivity	Human, Mouse
Specificity	Specific for human Galectin 3(GAL-3) denatured and native forms
Tested Applications	ELISA, WB, IHC; Recommended dilution: WB:1:500-1:5000, IHC:1:50-1:500
Relevance	Galactose-specific lectin which binds IgE. May mediate with the alpha-3, beta-1 integrin the stimulation by CSPG4 of endothelial cells migration. Together with DMBT1, required for terminal differentiation of columnar epithelial cells during early embryogenesis By similarity. In the nucleus: acts as a pre-mRNA splicing factor. Involved in acute inflammatory responses including neutrophil activation and adhesion, chemoattraction of monocytes macrophages, opsonization of apoptotic neutrophils, and activation of mast cells.
Form	Liquid
Conjugate	Non-conjugated
Storage Buffer	Preservative: 0.03% Proclin 300 Constituents: 50% Glycerol, 0.01M PBS, PH 7.4
Purification Method	>95%, Protein G purified
Isotype	IgG2b
Clonality	Monoclonal
Alias	Lectin, galactoside-binding, soluble, 3; LGALS3; CBP35; GAL3; GALBP; GALIG; LGALS2; MAC2; Galectin 3
Product Type	Monoclonal Antibody
Immunogen Species	Homo sapiens (Human)
Clone No.	3F2E2

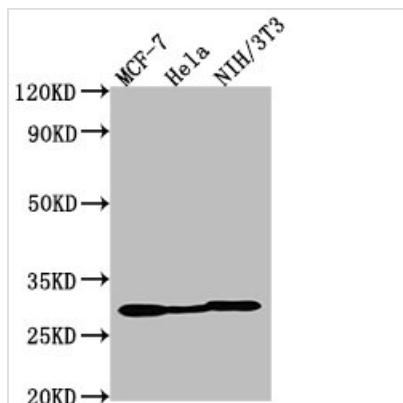
Image



Immunohistochemical of paraffin-embedded human ovarian cancer using CSB-MA0128871A0m at dilution of 1:100



Immunohistochemical of paraffin-embedded human small intestinal tissue using CSB-MA0128871A0m at dilution of 1:100



Western Blot

Positive WB detected in: MCF-7 whole cell lysate, HeLa whole cell lysate, NIH/3T3 whole cell lysate

All lanes: LGALS3 antibody at 1:2000

Secondary

Goat polyclonal to Mouse IgG at 1/50000 dilution

Predicted band size: 27 kDa

Observed band size: 27 kDa