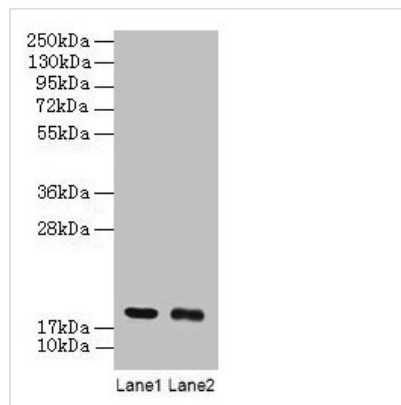




UBE2I Antibody

Product Code	CSB-PA00474A0Rb
Storage	Upon receipt, store at -20°C or -80°C. Avoid repeated freeze.
Uniprot No.	P63279
Immunogen	Recombinant Human SUMO-conjugating enzyme UBC9 protein (1-157AA)
Raised In	Rabbit
Species Reactivity	Human
Tested Applications	ELISA, WB, IHC; Recommended dilution: WB:1:500-1:5000, IHC:1:20-1:200
Form	Liquid
Conjugate	Non-conjugated
Storage Buffer	Preservative: 0.03% Proclin 300 Constituents: 50% Glycerol, 0.01M PBS, PH 7.4
Purification Method	>95%, Protein G purified
Isotype	IgG
Clonality	Polyclonal
Alias	SUMO-conjugating enzyme UBC9 (EC 2.3.2.-) (RING-type E3 SUMO transferase UBC9) (SUMO-protein ligase) (Ubiquitin carrier protein 9) (Ubiquitin carrier protein I) (Ubiquitin-conjugating enzyme E2 I) (Ubiquitin-protein ligase I) (p18), UBE2I, UBC9 UBCE9
Immunogen Species	Homo sapiens (Human)
Research Area	Others
Target Names	UBE2I

Image



Western blot

All lanes: UBE2I antibody at 2µg/ml

Lane 1: 293T whole cell lysate

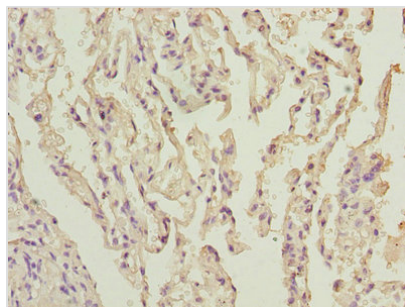
Lane 2: EC109 whole cell lysate

Secondary

Goat polyclonal to rabbit IgG at 1/15000 dilution

Predicted band size: 19 kDa

Observed band size: 19 kDa



Immunohistochemistry of paraffin-embedded human lung tissue using CSB-PA00474A0Rb at dilution of 1:100

Usage

For Research Use Only. Not for use in diagnostic or therapeutic procedures.