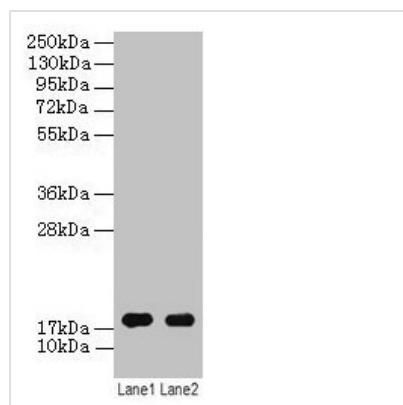




ATP5F1D Antibody

Product Code	CSB-PA00635A0Rb
Storage	Upon receipt, store at -20°C or -80°C. Avoid repeated freeze.
Uniprot No.	P30049
Immunogen	Recombinant Human ATP synthase subunit delta, mitochondrial protein (32-158AA)
Raised In	Rabbit
Species Reactivity	Human
Tested Applications	ELISA, WB, IHC; Recommended dilution: WB:1:500-1:5000, IHC:1:20-1:200
Form	Liquid
Conjugate	Non-conjugated
Storage Buffer	Preservative: 0.03% Proclin 300 Constituents: 50% Glycerol, 0.01M PBS, PH 7.4
Purification Method	>95%, Protein G purified
Isotype	IgG
Clonality	Polyclonal
Alias	ATP synthase subunit delta, mitochondrial (ATP synthase F1 subunit delta) (F-ATPase delta subunit), ATP5F1D, ATP5D
Immunogen Species	Homo sapiens (Human)
Research Area	Tags & Cell Markers
Target Names	ATP5F1D

Image



Western blot

All lanes: ATP5F1D antibody at 2µg/ml

Lane 1: EC109 whole cell lysate

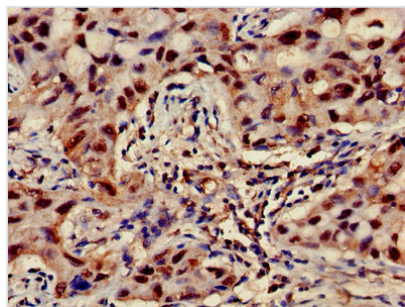
Lane 2: 293T whole cell lysate

Secondary

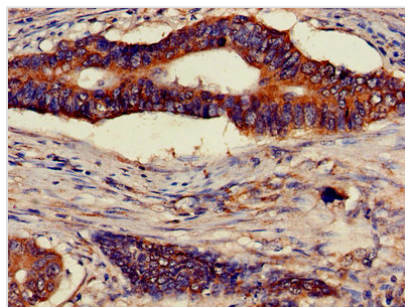
Goat polyclonal to rabbit IgG at 1/15000 dilution

Predicted band size: 18 kDa

Observed band size: 18 kDa



Immunohistochemistry of paraffin-embedded human lung cancer using CSB-PA00635A0Rb at dilution of 1:100



Immunohistochemistry of paraffin-embedded human colon cancer using CSB-PA00635A0Rb at dilution of 1:100

Usage

For Research Use Only. Not for use in diagnostic or therapeutic procedures.