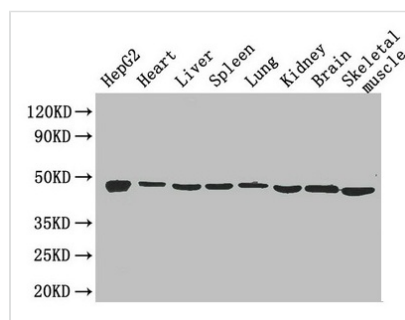




# Eno1 Antibody

<b>Product Code</b>	CSB-PA007670HA01MO
<b>Storage</b>	Upon receipt, store at -20°C or -80°C. Avoid repeated freeze.
<b>Uniprot No.</b>	P17182
<b>Immunogen</b>	Recombinant Mouse Alpha-enolase protein (2-433AA)
<b>Raised In</b>	Rabbit
<b>Species Reactivity</b>	Mouse, Human
<b>Tested Applications</b>	ELISA, WB; Recommended dilution: WB:1:1000-1:5000
<b>Form</b>	Liquid
<b>Conjugate</b>	Non-conjugated
<b>Storage Buffer</b>	Preservative: 0.03% Proclin 300 Constituents: 50% Glycerol, 0.01M PBS, PH 7.4
<b>Purification Method</b>	>95%, Protein G purified
<b>Isotype</b>	IgG
<b>Clonality</b>	Polyclonal
<b>Alias</b>	Alpha-enolase (EC 4.2.1.11) (2-phospho-D-glycerate hydro-lyase) (Enolase 1) (Non-neural enolase) (NNE), Eno1, Eno-1
<b>Immunogen Species</b>	Mus musculus (Mouse)
<b>Research Area</b>	Others
<b>Target Names</b>	Eno1

## Image



### Western Blot

Positive WB detected in: HepG2 whole cell lysate, Mouse heart tissue, Mouse liver tissue, Mouse spleen tissue, Mouse lung tissue, Mouse kidney tissue, Mouse brain tissue, Mouse skeletal muscle tissue

All lanes: Eno1 antibody at 2.6µg/ml

Secondary

Goat polyclonal to rabbit IgG at 1/50000 dilution

Predicted band size: 48 kDa

Observed band size: 48 kDa