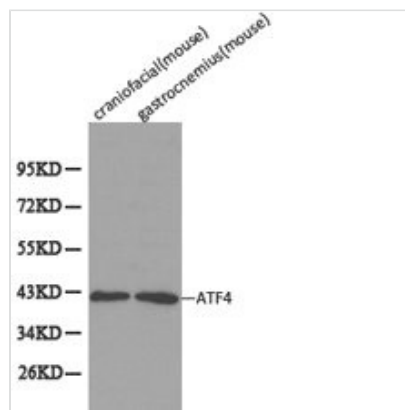




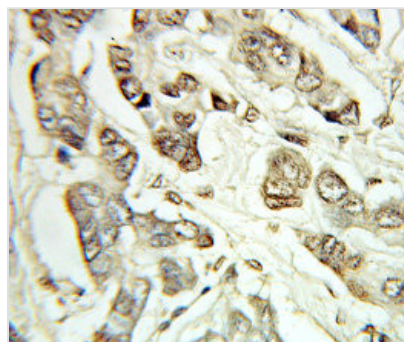
ATF4 Antibody

Product Code	CSB-PA002272KA01HU
Storage	Upon receipt, store at -20°C or -80°C. Avoid repeated freeze.
Uniprot No.	P18848
Immunogen	Recombinant protein of Human ATF4
Raised In	Rabbit
Species Reactivity	Human,Mouse,Rat
Tested Applications	ELISA,WB,IHC;WB:1:500-1:2000,IHC:1:50-1:200
Storage Buffer	Store at -20°C or -80°C. Avoid freeze / thaw cycles. Buffer: PBS with 0.02% sodium azide, 50% glycerol, pH7.3.
Purification Method	Affinity purification
Isotype	IgG
Alias	ATF4;CREB-2;CREB2;TAXREB67;TXREB
Product Type	Rabbit Anti Human PolyClonal Antibody
Immunogen Species	Homo sapiens (Human)
Intended Use	For research use only. Not for human, diagnostic or therapeutic use.
Target Names	ATF4

Image



Western blot analysis of extracts from mouse craniofacial and mouse gastrocnemius, using ATF4 antibody.



Immunohistochemistry of paraffin-embedded Breast cancer using ATF4 Antibody.



Target Details

This gene encodes a transcription factor that was originally identified as a widely expressed mammalian DNA binding protein that could bind a tax-responsive enhancer element in the LTR of HTLV-1. The encoded protein was also isolated and characterized as the cAMP-response element binding protein 2 (CREB-2). This protein belongs to a family of DNA-binding proteins that includes the AP-1 family of transcription factors, cAMP-response element binding proteins (CREBs) and CREB-like proteins. These transcription factors share a leucine zipper region that is involved in protein-protein interactions, located C-terminal to a stretch of basic amino acids that functions as a DNA binding domain. Two alternative transcripts encoding the same protein have been described. Two pseudogenes are located on the X chromosome at q28 in a region containing a large inverted duplication.