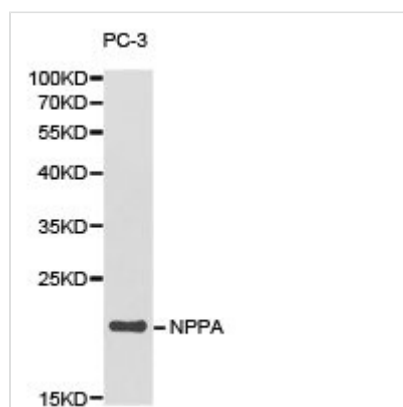




# NPPA Antibody

<b>Product Code</b>	CSB-PA016020KA01HU
<b>Storage</b>	Upon receipt, store at -20°C or -80°C. Avoid repeated freeze.
<b>Uniprot No.</b>	P01160
<b>Immunogen</b>	Recombinant protein of Human NPPA
<b>Raised In</b>	Rabbit
<b>Species Reactivity</b>	Human,Mouse,Rat
<b>Tested Applications</b>	ELISA,WB,IHC;WB:1:500-1:2000,IHC:1:50-1:200
<b>Storage Buffer</b>	Store at -20°C or -80°C. Avoid freeze / thaw cycles. Buffer: PBS with 0.02% sodium azide, 50% glycerol, pH7.3.
<b>Purification Method</b>	Affinity purification
<b>Isotype</b>	IgG
<b>Alias</b>	NPPA; ANF; ANP; PND; ATFB6; CDD-ANF
<b>Product Type</b>	Rabbit Anti Human PolyClonal Antibody
<b>Immunogen Species</b>	Homo sapiens (Human)
<b>Intended Use</b>	For research use only. Not for human, diagnostic or therapeutic use.
<b>Target Names</b>	NPPA

## Image



Western blot analysis of extracts of PC-3 cell lines, using NPPA antibody.

## Target Details

This protein belongs to the natriuretic peptide family. Natriuretic peptides are implicated in the control of extracellular fluid volume and electrolyte homeostasis. This protein is synthesized as a large precursor (containing a signal peptide), which is processed to release a peptide from the N-terminus with similarity to vasoactive peptide, cardiodilatin, and another peptide from the C-terminus with natriuretic-diuretic activity. Mutations in this gene have been associated with atrial fibrillation familial type 6.