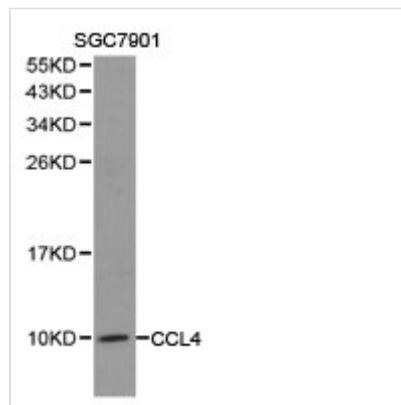




# CCL4 Antibody

<b>Product Code</b>	CSB-PA004797KA01HU
<b>Storage</b>	Upon receipt, store at -20°C or -80°C. Avoid repeated freeze.
<b>Uniprot No.</b>	P13236
<b>Immunogen</b>	A synthetic peptide of Human CCL4
<b>Raised In</b>	Rabbit
<b>Species Reactivity</b>	Human,Mouse,Rat
<b>Tested Applications</b>	ELISA,WB,IHC;WB:1:500-1:2000,IHC:1:50-1:200
<b>Form</b>	Liquid
<b>Storage Buffer</b>	Store at -20oC or -80oC. Avoid freeze / thaw cycles. Buffer: PBS with 0.09% Sodium azide, 50% glycerol, pH7.3.
<b>Purification Method</b>	Affinity purification
<b>Isotype</b>	IgG
<b>Product Type</b>	Polyclonal Antibody
<b>Immunogen Species</b>	Homo sapiens (Human)
<b>Target Names</b>	CCL4

## Image



Western blot analysis of extracts of SGC7901 cell lines, using CCL4 antibody.

## Usage

For Research Use Only. Not for use in diagnostic or therapeutic procedures.