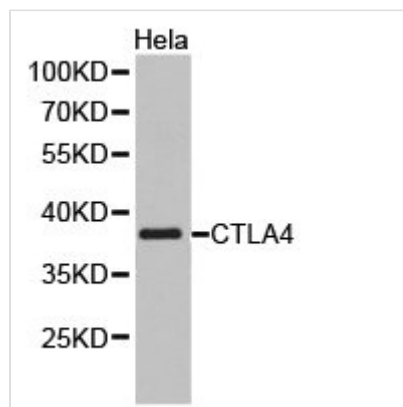




CTLA4 Antibody

Product Code	CSB-PA006163KA01HU
Storage	Upon receipt, store at -20°C or -80°C. Avoid repeated freeze.
Uniprot No.	P16410
Immunogen	A synthetic peptide of Human CTLA4
Raised In	Rabbit
Species Reactivity	Human
Tested Applications	ELISA, WB, IHC; WB: 1:500-1:2000, IHC: 1:50-1:200
Storage Buffer	Store at -20°C or -80°C. Avoid freeze / thaw cycles. Buffer: PBS with 0.02% sodium azide, 50% glycerol, pH7.3.
Purification Method	Affinity purification
Isotype	IgG
Alias	CTLA4; CD; CD152; CELIAC3; CTLA-4; GRD4; GSE; ICOS; IDDM12
Product Type	Rabbit Anti Human PolyClonal Antibody
Immunogen Species	Homo sapiens (Human)
Intended Use	For research use only. Not for human, diagnostic or therapeutic use.
Target Names	CTLA4

Image



Western blot analysis of extracts of HeLa cell lines, using CTLA4 antibody.

Target Details

This gene is a member of the immunoglobulin superfamily and encodes a protein which transmits an inhibitory signal to T cells. The protein contains a V domain, a transmembrane domain, and a cytoplasmic tail. Alternate transcriptional splice variants, encoding different isoforms, have been characterized. The membrane-bound isoform functions as a homodimer interconnected by a disulfide bond, while the soluble isoform functions as a monomer. Mutations in this gene have been associated with insulin-dependent diabetes mellitus, Graves disease, Hashimoto thyroiditis, celiac disease, systemic lupus erythematosus, thyroid-associated orbitopathy, and other autoimmune diseases.



Usage

For Research Use Only. Not for use in diagnostic or therapeutic procedures.