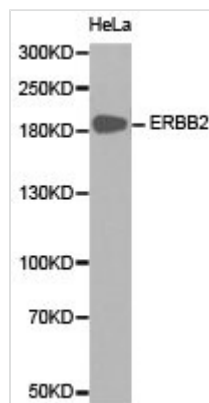


ERBB2 Antibody

Product Code	CSB-PA007763KA01HU
Storage	Upon receipt, store at -20°C or -80°C. Avoid repeated freeze.
Uniprot No.	P04626
Immunogen	A synthetic peptide of Human ERBB2
Raised In	Rabbit
Species Reactivity	Human,Mouse,Rat
Tested Applications	ELISA,WB,IHC;WB:1:500-1:1000,IHC:1:50-1:100
Storage Buffer	Store at -20°C or -80°C. Avoid freeze / thaw cycles. Buffer: PBS with 0.02% sodium azide, 50% glycerol, pH7.3.
Purification Method	Affinity purification
Isotype	IgG
Alias	ErbB2; CD340;HER-2;HER-2/neu;HER2;NEU;NGL;TKR1
Product Type	Rabbit Anti Human PolyClonal Antibody
Immunogen Species	Homo sapiens (Human)
Research Area	Transcription
Intended Use	For research use only. Not for human, diagnostic or therapeutic use.
Target Names	ERBB2

Image



Western blot analysis of extracts of HeLa cell line, using ERBB2 antibody.

Target Details

This gene encodes a member of the epidermal growth factor (EGF) receptor family of receptor tyrosine kinases. This protein has no ligand binding domain of its own and therefore cannot bind growth factors. However, it does bind tightly to other ligand-bound EGF receptor family members to form a heterodimer, stabilizing ligand binding and enhancing kinase-mediated activation of downstream signalling pathways, such as those involving mitogen-activated protein kinase and phosphatidylinositol-3 kinase. Allelic variations at amino acid positions 654 and 655 of isoform a (positions 624 and 625 of isoform b) have been reported, with the most common allele, Ile654/Ile655, shown here.



Amplification and/or overexpression of this gene has been reported in numerous cancers, including breast and ovarian tumors. Alternative splicing results in several additional transcript variants, some encoding different isoforms and others that have not been fully characterized.