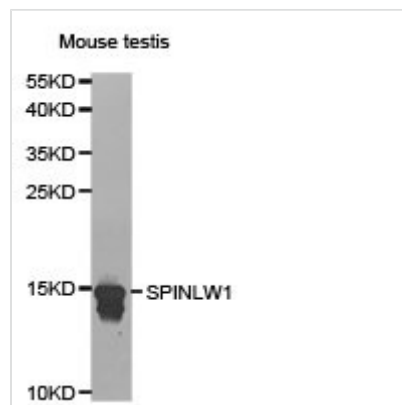




EPPIN Antibody

Product Code	CSB-PA022583KA01HU
Storage	Upon receipt, store at -20°C or -80°C. Avoid repeated freeze.
Uniprot No.	O95925
Immunogen	Recombinant protein of Human SPINLW1
Raised In	Rabbit
Species Reactivity	Human,Mouse,Rat
Tested Applications	ELISA,WB,IHC;WB:1:500-1:2000,IHC:1:50-1:200
Storage Buffer	Store at -20°C or -80°C. Avoid freeze / thaw cycles. Buffer: PBS with 0.02% sodium azide, 50% glycerol, pH7.3.
Purification Method	Affinity purification
Isotype	IgG
Alias	EPPIN; EPPIN1; EPPIN2; EPPIN3; WAP7; WFDC7; dJ461P17.2;CT71; CT72; SPINLW1
Product Type	Rabbit Anti Human PolyClonal Antibody
Immunogen Species	Homo sapiens (Human)
Intended Use	For research use only. Not for human, diagnostic or therapeutic use.
Target Names	EPPIN

Image



Western blot analysis of extracts of mouse testis cell lines, using SPINLW1 antibody.

Target Details

This gene encodes an epididymal protease inhibitor, which contains both kunitz-type and WAP-type four-disulfide core (WFDC) protease inhibitor consensus sequences. Most WFDC genes are localized to chromosome 20q12-q13 in two clusters: centromeric and telomeric. This gene is a member of the WFDC gene family and belongs to the telomeric cluster. Alternatively spliced transcript variants encoding distinct isoforms have been found for this gene.

Usage

For Research Use Only. Not for use in diagnostic or therapeutic procedures.