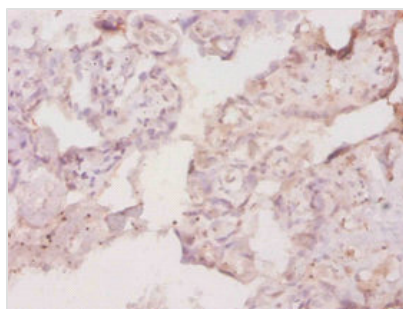




# Csf1 Antibody

<b>Product Code</b>	CSB-PA07779A0Rb
<b>Storage</b>	Upon receipt, store at -20°C or -80°C. Avoid repeated freeze.
<b>Uniprot No.</b>	P07141
<b>Immunogen</b>	Recombinant Mouse Macrophage colony-stimulating factor 1 protein (33-262AA)
<b>Raised In</b>	Rabbit
<b>Species Reactivity</b>	Mouse
<b>Tested Applications</b>	ELISA, IHC; Recommended dilution: IHC:1:10-1:100
<b>Form</b>	Liquid
<b>Conjugate</b>	Non-conjugated
<b>Storage Buffer</b>	Preservative: 0.03% Proclin 300 Constituents: 50% Glycerol, 0.01M PBS, PH 7.4
<b>Purification Method</b>	>95%, Protein G purified
<b>Isotype</b>	IgG
<b>Clonality</b>	Polyclonal
<b>Alias</b>	Macrophage colony-stimulating factor 1 (CSF-1) (MCSF) [Cleaved into: Processed macrophage colony-stimulating factor 1], Csf1, Csfm
<b>Immunogen Species</b>	Mus musculus (Mouse)
<b>Research Area</b>	Immunology
<b>Target Names</b>	Csf1

## Image



Immunohistochemistry of paraffin-embedded human placenta tissue using CSB-PA07779A0Rb at dilution of 1:20