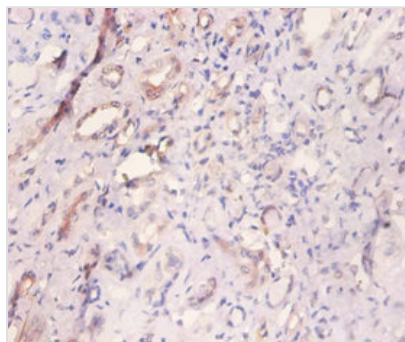




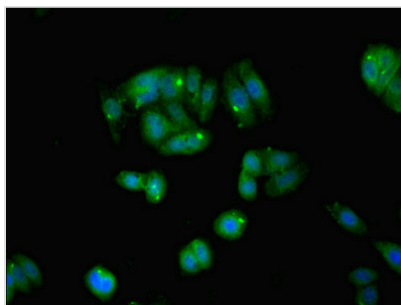
MYL6 Antibody

Product Code	CSB-PA05154A0Rb
Storage	Upon receipt, store at -20°C or -80°C. Avoid repeated freeze.
Uniprot No.	P60660
Immunogen	Recombinant Human Myosin light polypeptide 6 protein (3-151AA)
Raised In	Rabbit
Species Reactivity	Human
Tested Applications	ELISA, IHC, IF; Recommended dilution: IHC:1:20-1:200, IF:1:50-1:200
Form	Liquid
Conjugate	Non-conjugated
Storage Buffer	Preservative: 0.03% Proclin 300 Constituents: 50% Glycerol, 0.01M PBS, PH 7.4
Purification Method	>95%, Protein G purified
Isotype	IgG
Clonality	Polyclonal
Alias	Myosin light polypeptide 6 (17 kDa myosin light chain) (LC17) (Myosin light chain 3) (MLC-3) (Myosin light chain alkali 3) (Myosin light chain A3) (Smooth muscle and nonmuscle myosin light chain alkali 6), MYL6
Immunogen Species	Homo sapiens (Human)
Research Area	Others
Target Names	MYL6

Image



Immunohistochemistry of paraffin-embedded human kidney tissue using CSB-PA05154A0Rb at dilution of 1:100



Immunofluorescent analysis of HepG2 cells using CSB-PA05154A0Rb at dilution of 1:100 and Alexa Fluor 488-conjugated AffiniPure Goat Anti-Rabbit IgG(H+L)