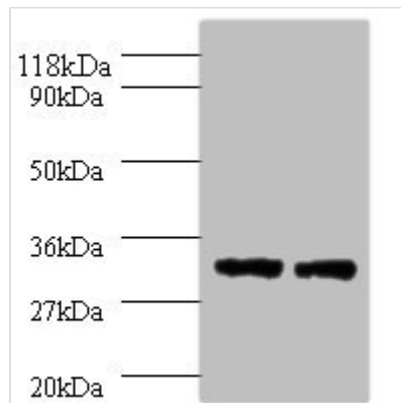




HLA-DPA1 Antibody

Product Code	CSB-PA14819A0Rb
Storage	Upon receipt, store at -20°C or -80°C. Avoid repeated freeze.
Uniprot No.	P20036
Immunogen	Recombinant Human HLA class II histocompatibility antigen, DP alpha 1 chain protein (29-222AA)
Raised In	Rabbit
Species Reactivity	Human
Tested Applications	ELISA, WB, IF; Recommended dilution: WB:1:1000-1:5000, IF:1:50-1:200
Form	Liquid
Conjugate	Non-conjugated
Storage Buffer	Preservative: 0.03% Proclin 300 Constituents: 50% Glycerol, 0.01M PBS, PH 7.4
Purification Method	>95%, Protein G purified
Isotype	IgG
Clonality	Polyclonal
Alias	HLA class II histocompatibility antigen, DP alpha 1 chain (DP(W3)) (DP(W4)) (HLA-SB alpha chain) (MHC class II DP3-alpha) (MHC class II DPA1), HLA-DPA1, HLA-DP1A HLASB
Immunogen Species	Homo sapiens (Human)
Research Area	Immunology
Target Names	HLA-DPA1

Image



Western blot

All lanes: HLA-DPA1 antibody at 2µg/ml

Lane 1: 293T whole cell lysate

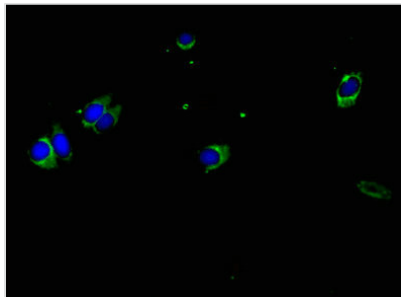
Lane 2: HepG2 whole cell lysate

Secondary

Goat polyclonal to rabbit IgG at 1/10000 dilution

Predicted band size: 30 kDa

Observed band size: 30 kDa



Immunofluorescent analysis of HeLa cells using CSB-PA14819A0Rb at dilution of 1:100 and Alexa Fluor 488-conjugated AffiniPure Goat Anti-Rabbit IgG(H+L)

Usage

For Research Use Only. Not for use in diagnostic or therapeutic procedures.