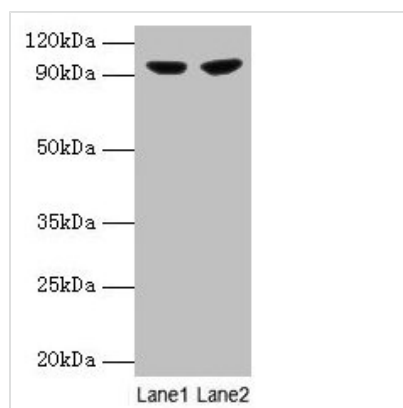




PYGL Antibody

Product Code	CSB-PA019122EA01HU
Storage	Upon receipt, store at -20°C or -80°C. Avoid repeated freeze.
Uniprot No.	P06737
Immunogen	Recombinant Human Glycogen phosphorylase, liver form protein (2-846AA)
Raised In	Rabbit
Species Reactivity	Human
Tested Applications	ELISA, WB, IHC; Recommended dilution: WB:1:1000-1:5000, IHC:1:20-1:200
Form	Liquid
Conjugate	Non-conjugated
Storage Buffer	Preservative: 0.03% Proclin 300 Constituents: 50% Glycerol, 0.01M PBS, PH 7.4
Purification Method	>95%, Protein G purified
Isotype	IgG
Clonality	Polyclonal
Alias	Glycogen phosphorylase, liver form (EC 2.4.1.1), PYGL
Immunogen Species	Homo sapiens (Human)
Research Area	Signal Transduction
Target Names	PYGL

Image



Western blot

All lanes: PYGL antibody at 2µg/ml

Lane 1: 293T whole cell lysate

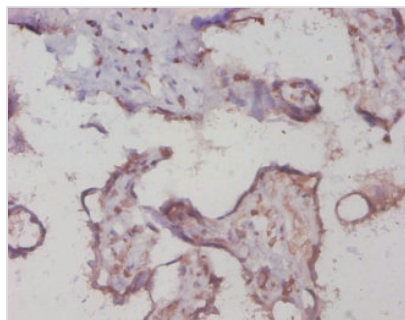
Lane 2: HepG2 whole cell lysate

Secondary

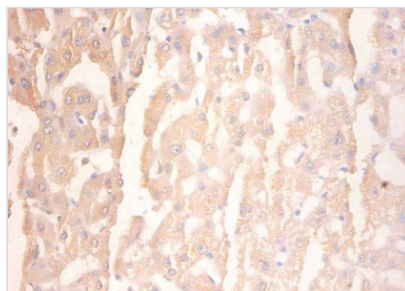
Goat polyclonal to rabbit IgG at 1/10000 dilution

Predicted band size: 98, 94 kDa

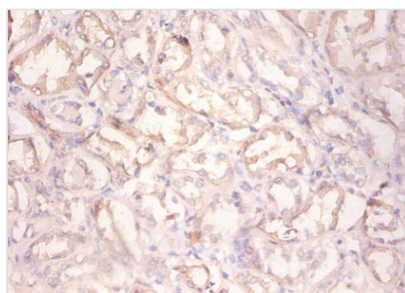
Observed band size: 98 kDa



Immunohistochemistry of paraffin-embedded human placenta tissue using CSB-PA019122EA01HU at dilution of 1:20



Immunohistochemistry of paraffin-embedded human liver tissue using CSB-PA019122EA01HU at dilution of 1:100



Immunohistochemistry of paraffin-embedded human kidney tissue using CSB-PA019122EA01HU at dilution of 1:100

Usage

For Research Use Only. Not for use in diagnostic or therapeutic procedures.