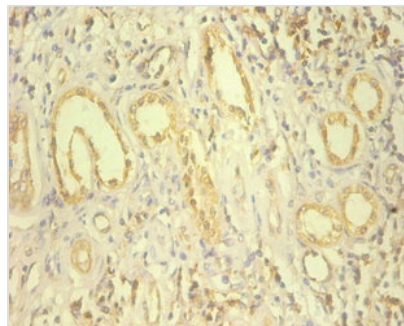




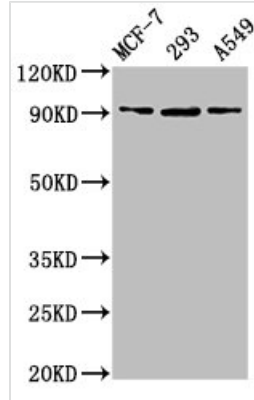
HSP90B1 Antibody

Product Code	CSB-PA10887A0Rb
Storage	Upon receipt, store at -20°C or -80°C. Avoid repeated freeze.
Uniprot No.	P14625
Immunogen	Recombinant Human Endoplasmic protein (27-799AA)
Raised In	Rabbit
Species Reactivity	Human
Tested Applications	ELISA, WB, IHC, IF; Recommended dilution: WB:1:1000-1:5000, IHC:1:20-1:200, IF:1:50-1:200
Form	Liquid
Conjugate	Non-conjugated
Storage Buffer	Preservative: 0.03% Proclin 300 Constituents: 50% Glycerol, 0.01M PBS, PH 7.4
Purification Method	>95%, Protein G purified
Isotype	IgG
Clonality	Polyclonal
Alias	Endoplasmic (94 kDa glucose-regulated protein) (GRP-94) (Heat shock protein 90 kDa beta member 1) (Tumor rejection antigen 1) (gp96 homolog), HSP90B1, GRP94 TRA1
Immunogen Species	Homo sapiens (Human)
Research Area	Tags & Cell Markers
Target Names	HSP90B1

Image



Immunohistochemistry of paraffin-embedded human kidney tissue using CSB-PA10887A0Rb at dilution of 1:100

**Western Blot**

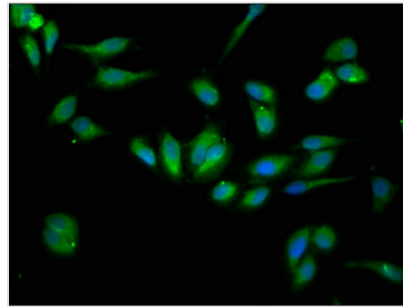
Positive WB detected in: MCF-7 whole cell lysate, 293 whole cell lysate, A549 whole cell lysate

All lanes: HSP90B1 antibody at 6.3 μ g/ml
Secondary

Goat polyclonal to rabbit IgG at 1/50000 dilution

Predicted band size: 93 kDa

Observed band size: 93 kDa



Immunofluorescence staining of HeLa cells with CSB-PA10887A0Rb at 1:133, counter-stained with DAPI. The cells were fixed in 4% formaldehyde, permeabilized using 0.2% Triton X-100 and blocked in 10% normal Goat Serum. The cells were then incubated with the antibody overnight at 4°C. The secondary antibody was Alexa Fluor 488-conjugated AffiniPure Goat Anti-Rabbit IgG(H+L).