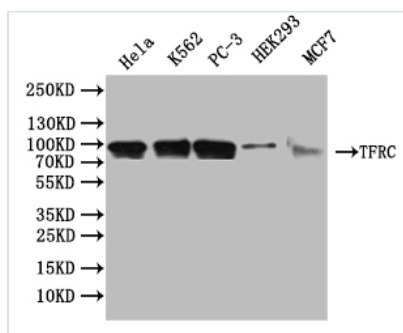




TFRC Antibody

Product Code	CSB-PA07219A0Rb
Storage	Upon receipt, store at -20°C or -80°C. Avoid repeated freeze.
Uniprot No.	P02786
Immunogen	Recombinant Human Transferrin receptor protein 1 protein
Raised In	Rabbit
Species Reactivity	Human
Tested Applications	ELISA, WB, IHC, IF; Recommended dilution: WB:1:3000-1:6000, IHC:1:100-1:300, IF:1:10-1:100
Form	Liquid
Storage Buffer	Preservative: 0.02% sodium azide Constituents: PBS containing 50% glycerol pH 7.3
Purification Method	Antigen affinity purification
Isotype	IgG
Clonality	Polyclonal
Product Type	Polyclonal Antibody
Immunogen Species	Homo sapiens (Human)
Research Area	Cardiovascular
Target Names	TFRC

Image



Western Blot

Positive WB detected in: HeLa whole cell lysate, K562 whole cell lysate, PC-3 whole cell lysate, HEK293 whole cell lysate, MCF7 whole cell lysate

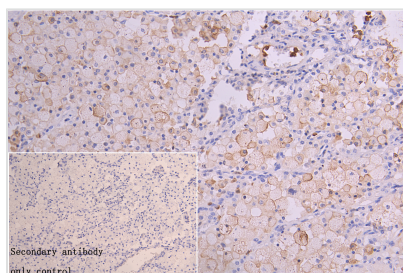
All lanes: TFRC antibody at 1:5000

Secondary

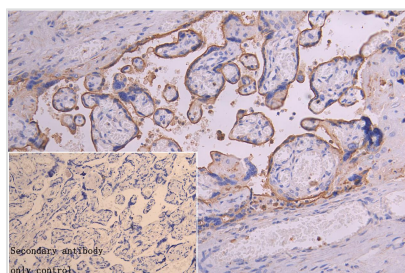
Goat polyclonal to rabbit IgG at 1/50000 dilution

Predicted band size: 85 kDa

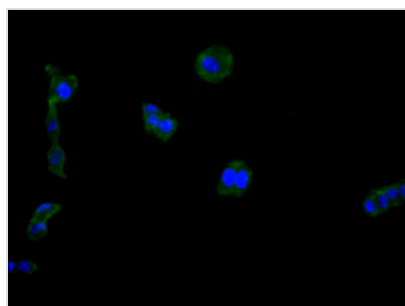
Observed band size: 85 kDa



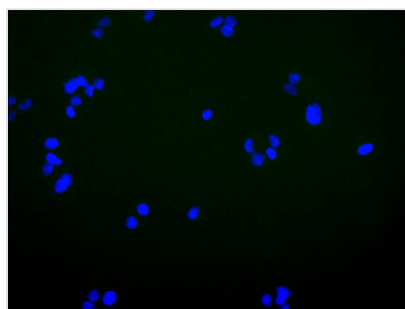
IHC image of CSB-PA07219A0Rb diluted at 1:150 and staining in paraffin-embedded Human lung tissue performed on a Leica Bond™ system. After dewaxing and hydration, antigen retrieval was mediated by high pressure in a citrate buffer (pH 6.0). Section was blocked with 10% normal goat serum 30min at RT. Then primary antibody (1% BSA) was incubated at 4°C overnight. The primary is detected by a Goat anti-rabbit polymer IgG labeled by HRP and visualized using 0.05% DAB.



IHC image of CSB-PA07219A0Rb diluted at 1:150 and staining in paraffin-embedded human placenta tissue performed on a Leica Bond™ system. After dewaxing and hydration, antigen retrieval was mediated by high pressure in a citrate buffer (pH 6.0). Section was blocked with 10% normal goat serum 30min at RT. Then primary antibody (1% BSA) was incubated at 4°C overnight. The primary is detected by a Goat anti-rabbit polymer IgG labeled by HRP and visualized using 0.05% DAB.



Immunofluorescence staining of HepG2 cell with CSB-PA07219A0Rb at 1:15, counter-stained with DAPI. The cells were fixed in 4% formaldehyde and blocked in 10% normal Goat Serum. The cells were then incubated with the antibody overnight at 4°C. The secondary antibody was Alexa Fluor 488-conjugated AffiniPure Goat Anti-Rabbit IgG(H+L).



Immunofluorescence staining of HepG2 cell with 5% goat serum, counter-stained with DAPI. The cells were fixed in 4% formaldehyde and blocked in 10% normal Goat Serum. The cells were then incubated with the antibody overnight at 4°C. The secondary antibody was Alexa Fluor 488-conjugated AffiniPure Goat Anti-Rabbit IgG(H+L).

Usage

For Research Use Only. Not for use in diagnostic or therapeutic procedures.