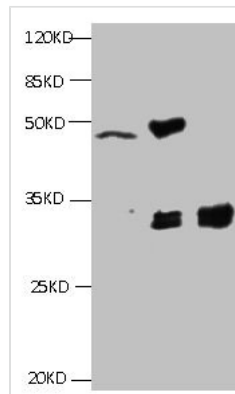




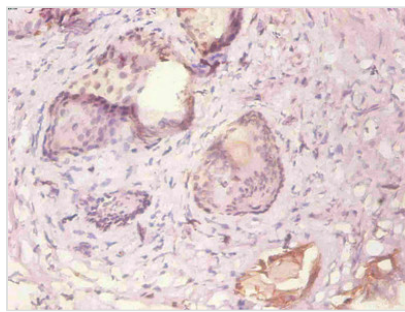
KRT19 Monoclonal Antibody

Product Code	CSB-MA0125342A0m
Storage	Upon receipt, store at -20°C or -80°C. Avoid repeated freeze.
Immunogen	Cyfra21-1 (KS19.1)
Raised In	mouse
Species Reactivity	Human
Specificity	specific for human Cyfra21-1 (KS19.1) denatured and native forms
Tested Applications	ELISA, WB, IHC; Recommended dilution: WB:1:500-1:5000, IHC:1:50-1:500
Relevance	Ks 19.1 represents an excellent marker to discriminate glandular epithelial carcinoma from those of different origin. No reaction with hepatocellular carcinoma. Polypeptide reacting: Mr 40 000 polypeptide (keratin K19; formerly also designated cytokeratin 19) of human glandular epithelia. he epitope has been localized on aa. 317-333(KAALEDTLAETEARFKS) of the alpha-helical fragment. Involved in the organization of myofibers. Together with KRT8, helps to link the contractile apparatus to dystrophin at the costameres of striated muscle.
Form	liquid
Conjugate	Non-conjugated
Storage Buffer	Preservative: 15mmol/L NaN3Constituents: 0.1mol/L NaCl
Purification Method	>95%,Protein G purified
Isotype	IgG2a
Clonality	monoclonal
Alias	KRT19,CK19
Product Type	Monoclonal Antibody
Immunogen Species	Homo sapiens (Human)
Clone No.	2B1D6

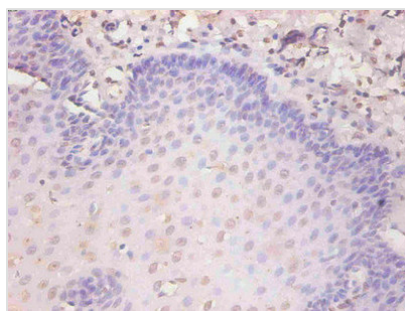
Image



All lanes: Mouse anti-Human Cyfra21-1(KS19.1) monoclonal antibody at 4ug/ml
 Lane 1: MCF-7 cell lysate
 Lane2: MDA-MB-231 cell lysate
 Lane3: HepG2 cell lysate
 Secondary HRP labeled Goat polyclonal to Mouse IgG at 1/3000 dilution
 Predicted band size : 30 kDa
 Observed band size : 32 kDa
 Additional bands at: 50 kDa



Immunohistochemical of paraffin-embedded human prostate tissue using CSB-MA0125342A0m at dilution of 1:200



Immunohistochemical of paraffin-embedded human esophageal tissue using CSB-MA0125342A0m at dilution of 1:200