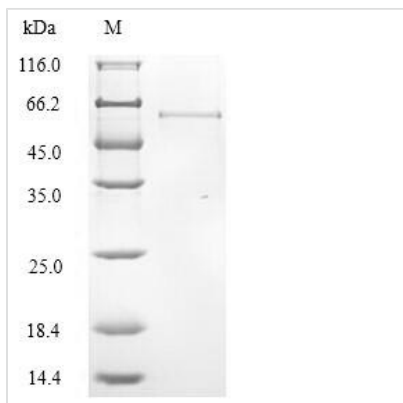




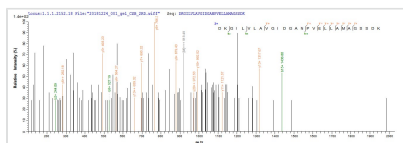
Recombinant Human Collagen alpha-6 (VI) chain (COL6A6), partial

Product Code	CSB-YP409861HU
Relevance	Collagen VI acts as a cell-binding protein.
Abbreviation	Recombinant Human COL6A6 protein, partial
Storage	The shelf life is related to many factors, storage state, buffer ingredients, storage temperature and the stability of the protein itself. Generally, the shelf life of liquid form is 6 months at -20°C/-80°C. The shelf life of lyophilized form is 12 months at -20°C/-80°C.
Uniprot No.	A6NMZ7
Product Type	Recombinant Protein
Immunogen Species	Homo sapiens (Human)
Purity	≥ 90% as determined by SDS-PAGE.
Sequence	<p>VDTEEADIYLLIDGSGSTQATDFHEMKTFLSEVVGMFNIAPHKVRVAVQYAD SWDLEFEINKYSNKQDLGKAIENIRQMGGNTNTGAALNFTLSLLQKAKKQRGN KVPCHLVVLTNGMSKDSILEPANRLREEHIRVYAIGIKEANQTQLREIAGEEKRV YYVHDFDALKDIRNQVVQEICTEEACKEMKADIMFLVDSSGSIGPENFSKMKTF MKNLVSKSQIGPDRVQIGVVQFSDINKEEFQLNRFMSQSDISNAIDQMAHIGQT TLTGSALSFVSQYFSPKTKGARNIRKFLILITDGEAQDIVKEPAVVLRRQEGVIIYS VGVFGSNVTQLEEISGRPEMVFYVENFDILQRIEDDLVFGICSPREECKRIEVL VVVIDSSGSIDYDEYNIMKDFMIGLVKKADVGKNQVRFGALKYADDPEVLVFL DDFGKLEVISVLQNDQAMGGSTYAEALGFSDHMFTEARG SRLNKGVPQVLI VITDGESHDADKLNATAKALRDKGILVLA VGIDGANPV LELLAMAGSSDKYFFVE TFGGLK GIFSDV</p>
Research Area	Signal Transduction
Source	Yeast
Target Names	COL6A6
Protein Names	Recommended name: Collagen alpha-6(VI) chain
Expression Region	430-982aa
Notes	Repeated freezing and thawing is not recommended. Store working aliquots at 4°C for up to one week.
Tag Info	N-terminal 6xHis-tagged
Mol. Weight	63.4kDa
Protein Length	Partial

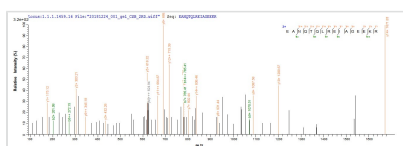
Image



(Tris-Glycine gel) Discontinuous SDS-PAGE (reduced) with 5% enrichment gel and 15% separation gel.



Based on the SEQUEST from database of Yeast host and target protein, the LC-MS/MS Analysis result of CSB-YP409861HU could indicate that this peptide derived from Yeast-expressed Homo sapiens (Human) COL6A6.



Based on the SEQUEST from database of Yeast host and target protein, the LC-MS/MS Analysis result of CSB-YP409861HU could indicate that this peptide derived from Yeast-expressed Homo sapiens (Human) COL6A6.

Reconstitution

We recommend that this vial be briefly centrifuged prior to opening to bring the contents to the bottom. Please reconstitute protein in deionized sterile water to a concentration of 0.1-1.0 mg/mL. We recommend to add 5-50% of glycerol (final concentration) and aliquot for long-term storage at -20°C/-80°C. Our default final concentration of glycerol is 50%. Customers could use it as reference.

Shelf Life

The shelf life is related to many factors, storage state, buffer ingredients, storage temperature and the stability of the protein itself.

Generally, the shelf life of liquid form is 6 months at -20°C/-80°C. The shelf life of lyophilized form is 12 months at -20°C/-80°C.