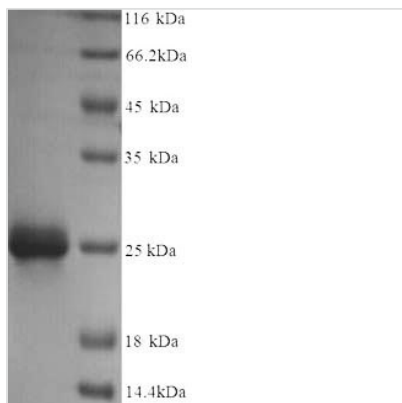


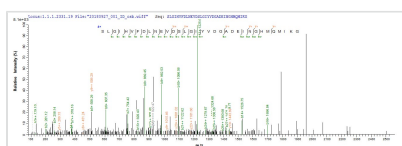


Recombinant Escherichia coli Ribose-5-phosphate isomerase A (rpiA)

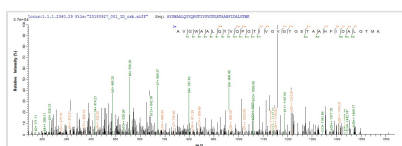
Product Code	CSB-YP540419ENT
Relevance	Involved in the first step of the non-oxidative branch of the pentose phosphate pathway. It catalyzes the reversible conversion of ribose-5-phosphate to ribulose 5-phosphate. Can also act on D-ribose-5-diphosphate and D-ribose-5-triphosphate as substrate.
Abbreviation	Recombinant E.coli rpiA protein
Storage	The shelf life is related to many factors, storage state, buffer ingredients, storage temperature and the stability of the protein itself. Generally, the shelf life of liquid form is 6 months at -20°C/-80°C. The shelf life of lyophilized form is 12 months at -20°C/-80°C.
Uniprot No.	P0A7Z0
Alias	Phosphoriboisomerase A
Product Type	Recombinant Protein
Immunogen Species	Escherichia coli (strain K12)
Purity	≥ 90% as determined by SDS-PAGE.
Sequence	MTQDELKKA V GWAALQYVQPGTIVGVGTGSTAAHFIDALGTMKGQIEGAVSS SDASTEKLKSLGIHVFDLNEVDSLGIYVDGADEINGHMQMIKGGGAALTREKIIA SVAEKFICIADASKQVDILGKFPLPVEVIPMARS AVARQLVKLGGRPEYRQGVV TDNGNVILDVHGMEILDPIAMENAINAIPGVVTVGLFANRGADVALIGTPDGVKT IVK
Research Area	Others
Source	Yeast
Target Names	rpiA
Protein Names	Phosphoriboisomerase A
Expression Region	1-219aa
Notes	Repeated freezing and thawing is not recommended. Store working aliquots at 4°C for up to one week.
Tag Info	Tag-Free
Mol. Weight	22.9 kDa
Protein Length	Full Length
Image	



(Tris-Glycine gel) Discontinuous SDS-PAGE (reduced) with 5% enrichment gel and 15% separation gel.



Based on the SEQUEST from database of Yeast host and target protein, the LC-MS/MS Analysis result of CSB-YP540419ENT could indicate that this peptide derived from Yeast-expressed Escherichia coli (strain K12) rpiA.



Based on the SEQUEST from database of Yeast host and target protein, the LC-MS/MS Analysis result of CSB-YP540419ENT could indicate that this peptide derived from Yeast-expressed Escherichia coli (strain K12) rpiA.

Reconstitution

We recommend that this vial be briefly centrifuged prior to opening to bring the contents to the bottom. Please reconstitute protein in deionized sterile water to a concentration of 0.1-1.0 mg/mL. We recommend to add 5-50% of glycerol (final concentration) and aliquot for long-term storage at -20°C/-80°C. Our default final concentration of glycerol is 50%. Customers could use it as reference.

Shelf Life

The shelf life is related to many factors, storage state, buffer ingredients, storage temperature and the stability of the protein itself. Generally, the shelf life of liquid form is 6 months at -20°C/-80°C. The shelf life of lyophilized form is 12 months at -20°C/-80°C.